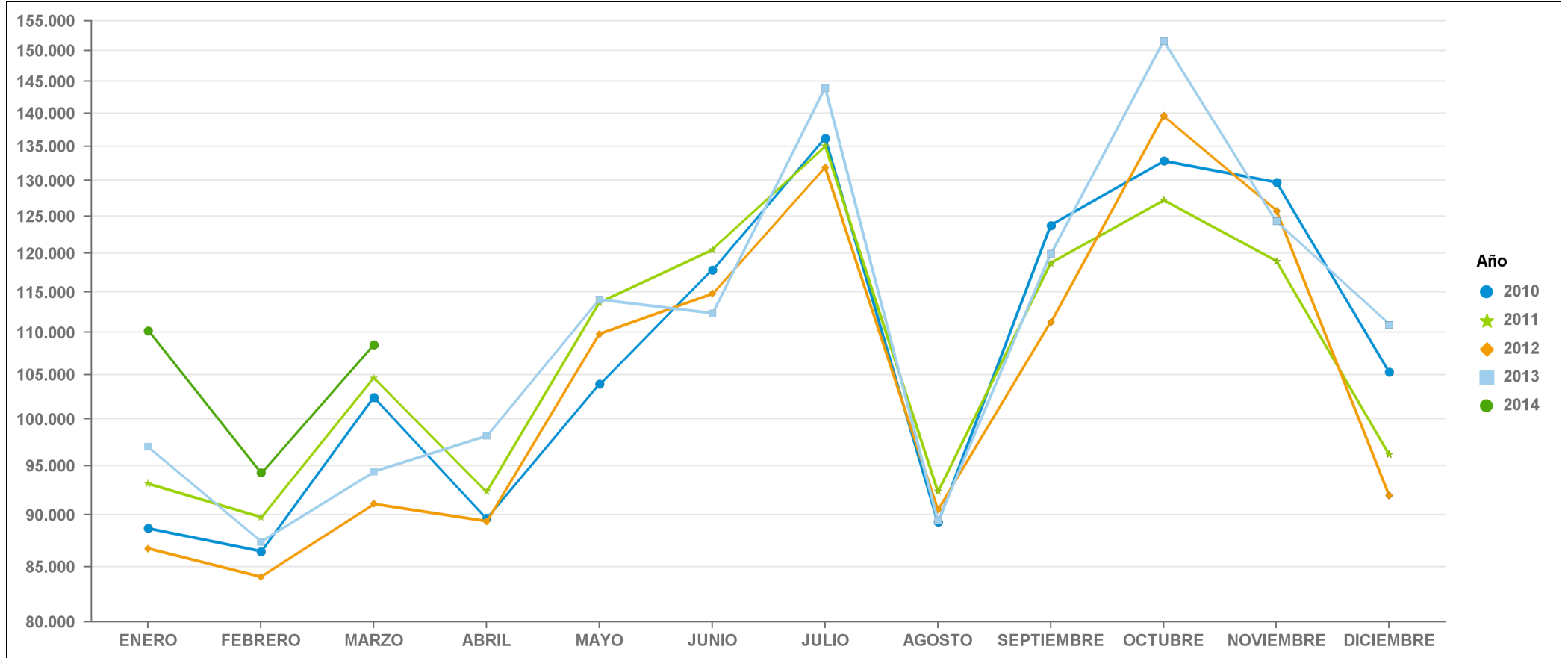


ESTADÍSTICA COMUNIDAD DE VALENCIANA

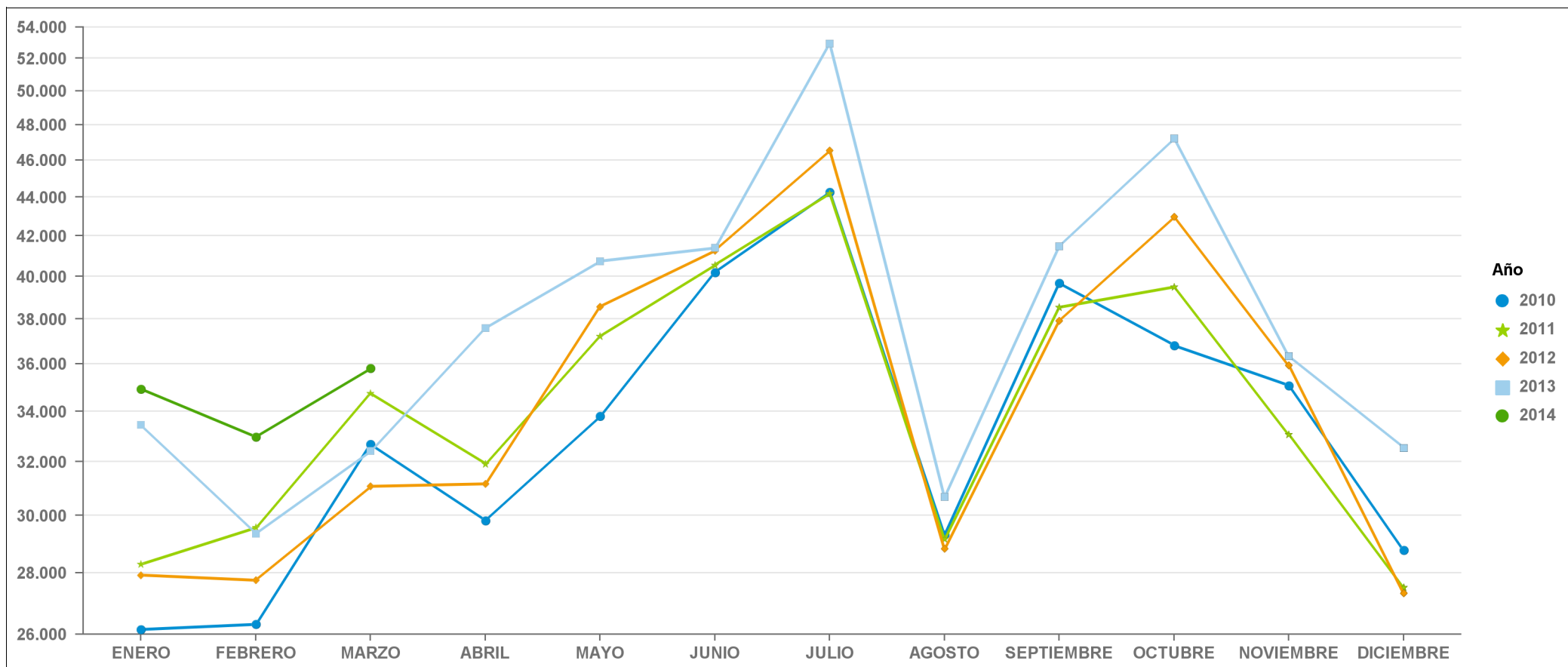
EVOLUCIÓN MENSUAL DE LA CONTRATACIÓN

PERÍODO 2010 - 2014



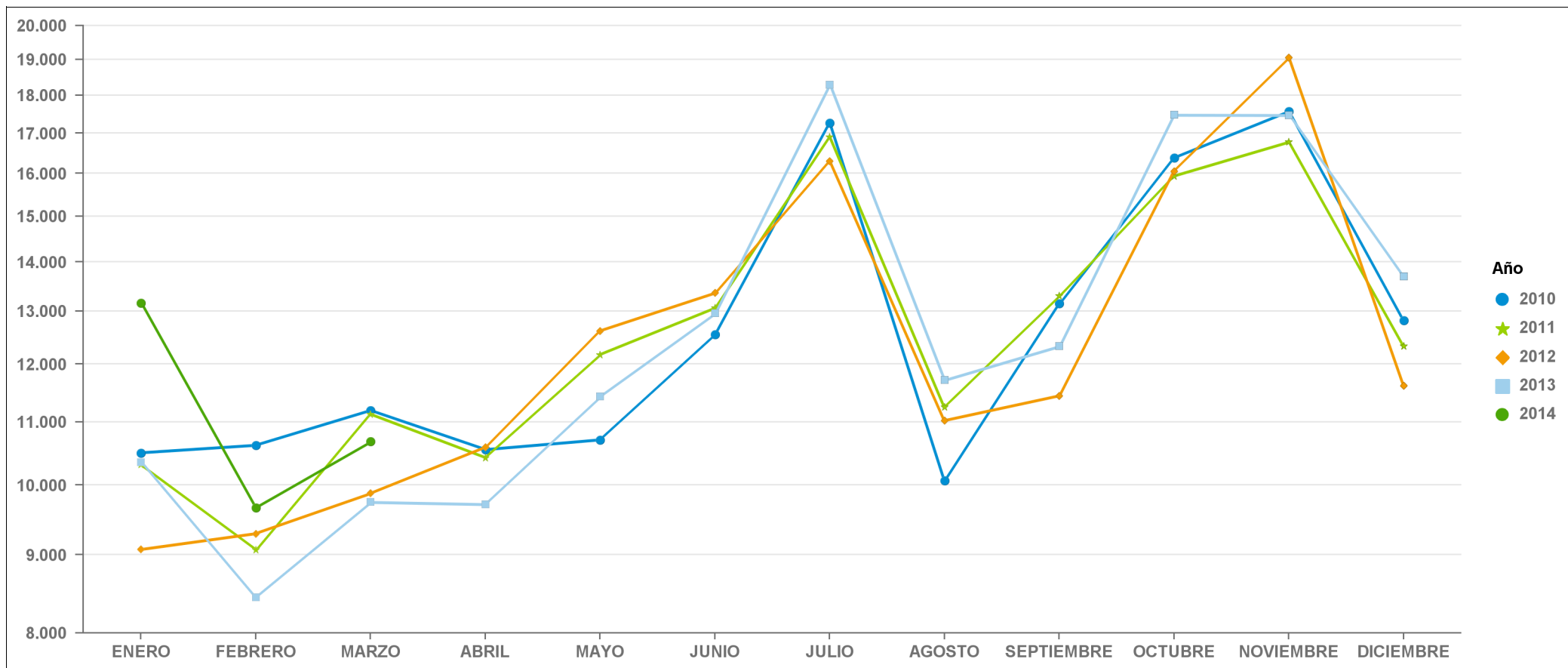
| | | | | | | | | | | | | |
|------|---------|--------|---------|--------|---------|---------|---------|--------|---------|---------|---------|---------|
| 2010 | 88.676 | 86.457 | 102.399 | 89.686 | 103.915 | 136.196 | 117.844 | 89.288 | 123.772 | 132.861 | 129.733 | 105.347 |
| 2011 | 93.141 | 89.758 | 104.610 | 92.360 | 113.670 | 135.075 | 120.493 | 92.373 | 118.725 | 127.248 | 118.943 | 96.201 |
| 2012 | 86.734 | 84.050 | 91.092 | 89.365 | 109.813 | 131.873 | 114.803 | 90.553 | 111.276 | 139.578 | 125.720 | 91.954 |
| 2013 | 97.001 | 87.360 | 94.376 | 98.188 | 114.057 | 143.975 | 112.341 | 89.436 | 119.981 | 151.553 | 124.320 | 110.927 |
| 2014 | 110.174 | 94.281 | 108.535 | 0 | 0 | 0 | 0 | 0 | 0 | 0 | 0 | 0 |

ALICANTE



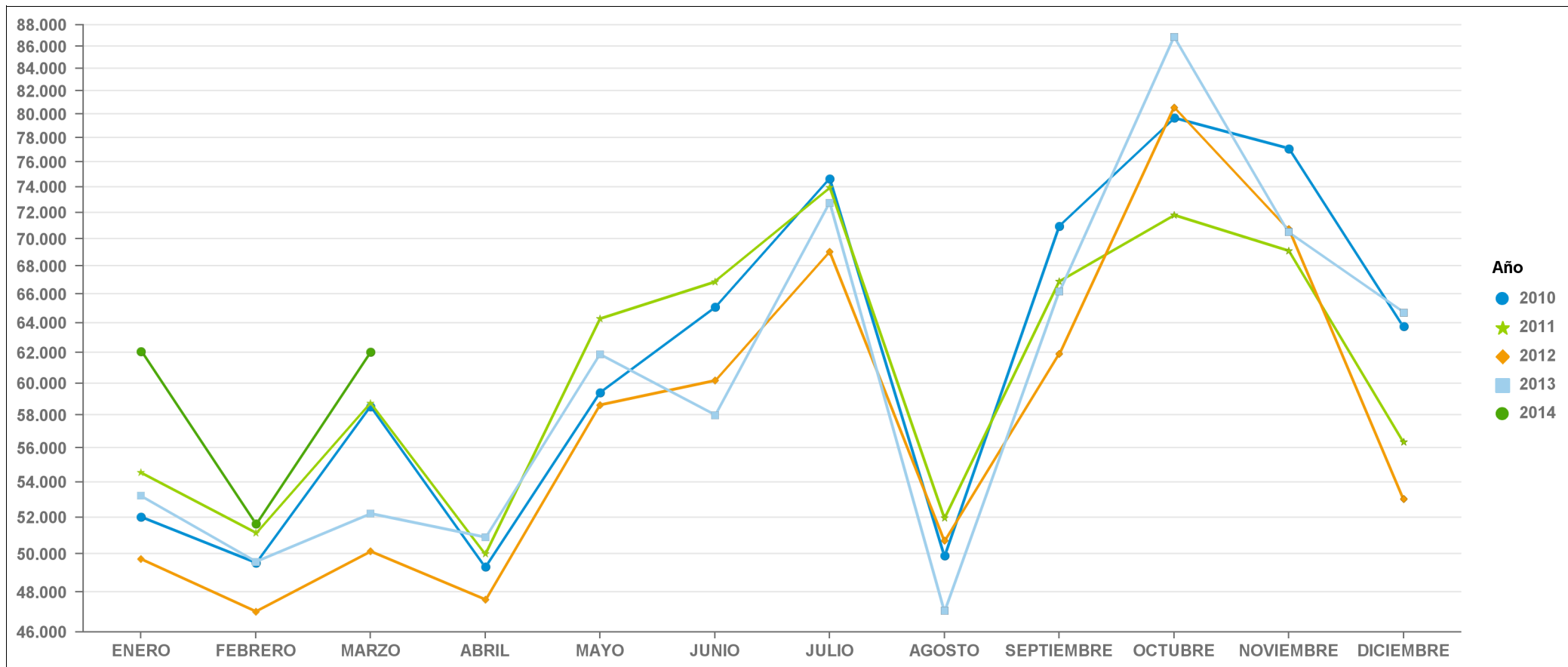
| | | | | | | | | | | | | |
|------|--------|--------|--------|--------|--------|--------|--------|--------|--------|--------|--------|--------|
| 2010 | 26.150 | 26.313 | 32.682 | 29.806 | 33.810 | 44.274 | 40.194 | 29.317 | 39.672 | 36.807 | 35.070 | 28.774 |
| 2011 | 28.281 | 29.561 | 34.748 | 31.919 | 37.215 | 44.199 | 40.550 | 29.153 | 38.536 | 39.494 | 33.065 | 27.513 |
| 2012 | 27.920 | 27.746 | 31.067 | 31.160 | 38.570 | 46.546 | 41.258 | 28.813 | 37.913 | 42.966 | 35.932 | 27.322 |
| 2013 | 33.444 | 29.338 | 32.416 | 37.574 | 40.738 | 52.931 | 41.389 | 30.678 | 41.470 | 47.225 | 36.340 | 32.534 |
| 2014 | 34.932 | 32.963 | 35.806 | 0 | 0 | 0 | 0 | 0 | 0 | 0 | 0 | 0 |

CASTELLÓN



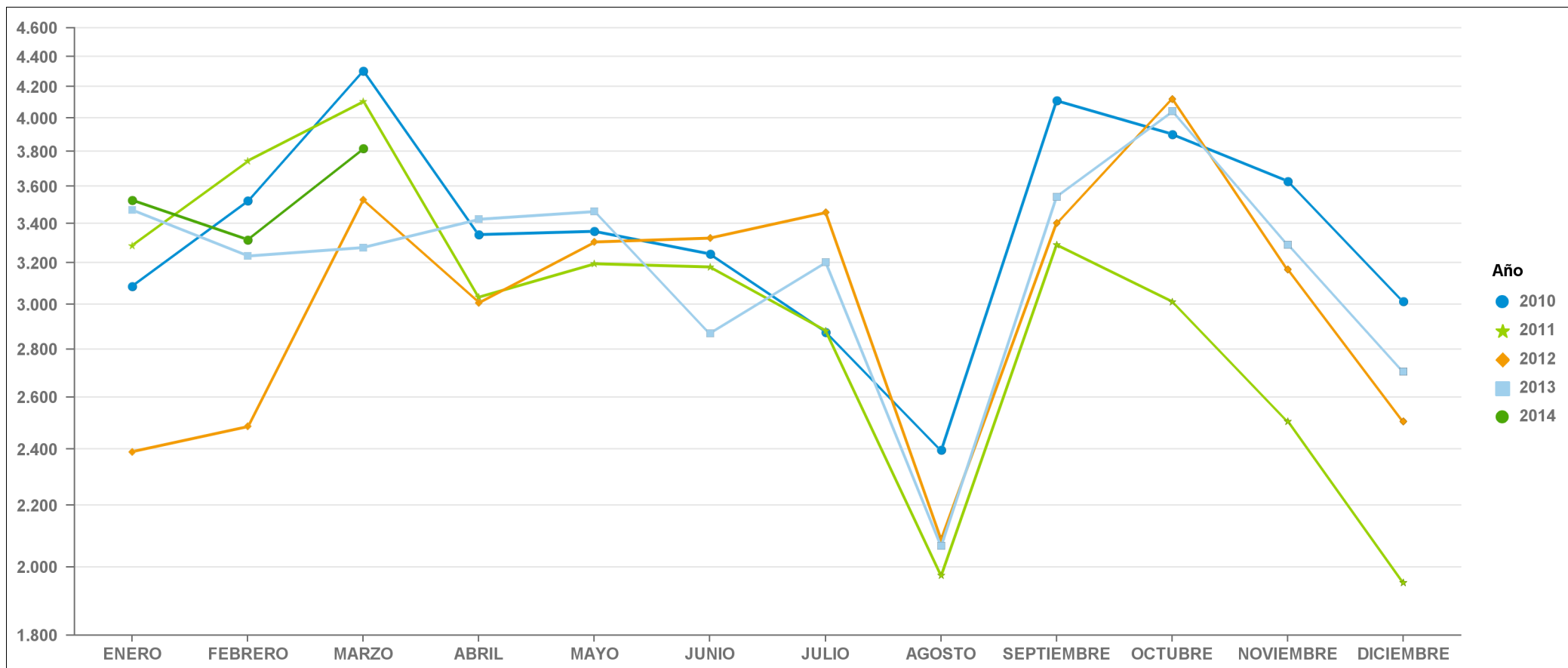
| | | | | | | | | | | | | |
|------|--------|--------|--------|--------|--------|--------|--------|--------|--------|--------|--------|--------|
| 2010 | 10.498 | 10.618 | 11.194 | 10.548 | 10.706 | 17.271 | 12.552 | 10.068 | 13.146 | 16.378 | 17.570 | 12.822 |
| 2011 | 10.313 | 9.067 | 11.129 | 10.419 | 12.174 | 16.903 | 13.063 | 11.245 | 13.303 | 15.934 | 16.775 | 12.333 |
| 2012 | 9.073 | 9.294 | 9.875 | 10.591 | 12.617 | 16.299 | 13.360 | 11.020 | 11.443 | 16.055 | 19.055 | 11.619 |
| 2013 | 10.350 | 8.443 | 9.748 | 9.716 | 11.429 | 18.284 | 12.958 | 11.714 | 12.332 | 17.479 | 17.472 | 13.694 |
| 2014 | 13.157 | 9.666 | 10.681 | 0 | 0 | 0 | 0 | 0 | 0 | 0 | 0 | 0 |

VALENCIA



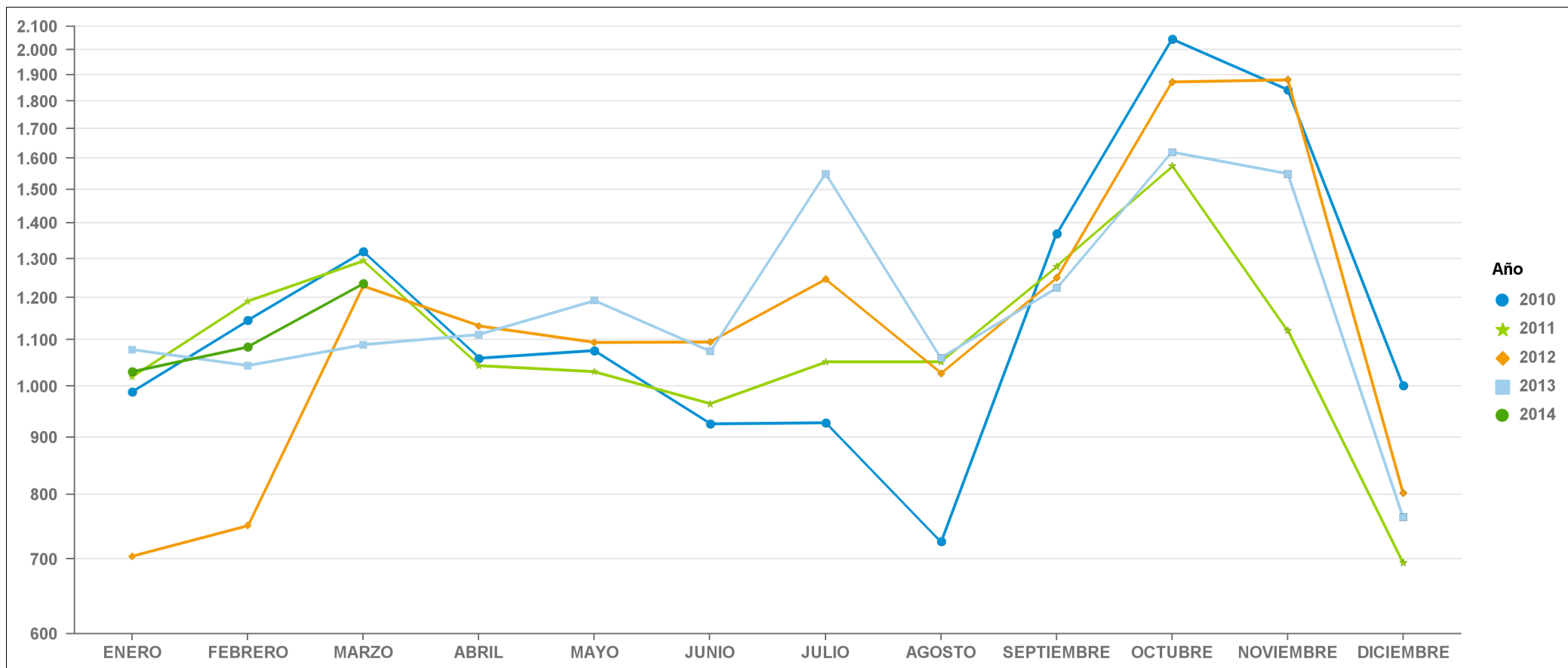
| | | | | | | | | | | | | |
|------|--------|--------|--------|--------|--------|--------|--------|--------|--------|--------|--------|--------|
| 2010 | 52.028 | 49.526 | 58.523 | 49.332 | 59.399 | 74.651 | 65.098 | 49.903 | 70.954 | 79.676 | 77.093 | 63.751 |
| 2011 | 54.547 | 51.130 | 58.733 | 50.022 | 64.281 | 73.973 | 66.880 | 51.975 | 66.886 | 71.820 | 69.103 | 56.355 |
| 2012 | 49.741 | 47.010 | 50.150 | 47.614 | 58.626 | 69.028 | 60.185 | 50.720 | 61.920 | 80.557 | 70.733 | 53.013 |
| 2013 | 53.207 | 49.579 | 52.212 | 50.898 | 61.890 | 72.760 | 57.994 | 47.044 | 66.179 | 86.849 | 70.508 | 64.699 |
| 2014 | 62.085 | 51.652 | 62.048 | 0 | 0 | 0 | 0 | 0 | 0 | 0 | 0 | 0 |

ALICANTE



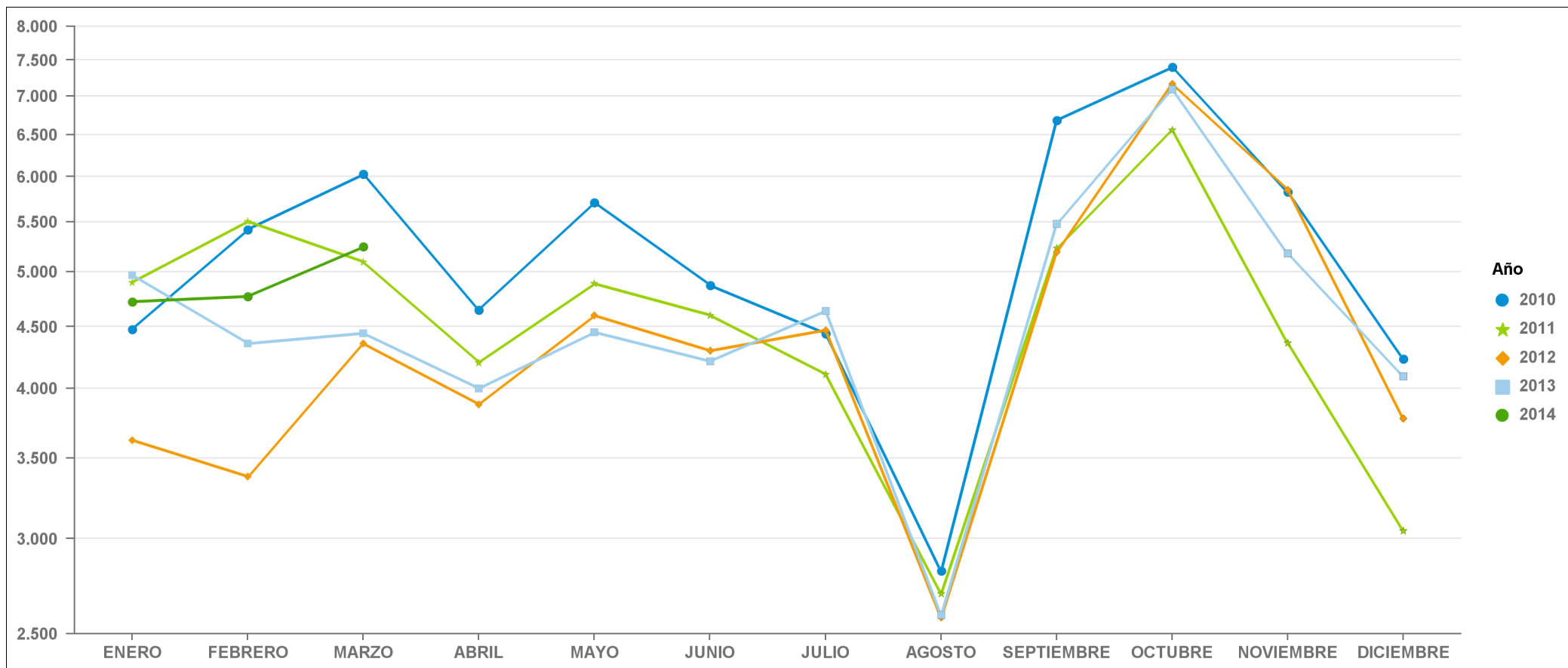
| | | | | | | | | | | | | |
|------|-------|-------|-------|-------|-------|-------|-------|-------|-------|-------|-------|-------|
| 2010 | 3.086 | 3.522 | 4.302 | 3.342 | 3.359 | 2.874 | 3.243 | 2.396 | 4.110 | 3.902 | 3.628 | 3.015 |
| 2011 | 3.286 | 3.745 | 4.106 | 3.034 | 3.195 | 2.880 | 3.179 | 1.975 | 3.290 | 3.012 | 2.505 | 1.953 |
| 2012 | 2.390 | 2.485 | 3.526 | 3.007 | 3.304 | 3.458 | 3.324 | 2.089 | 3.403 | 4.121 | 3.166 | 2.504 |
| 2013 | 3.472 | 3.233 | 3.276 | 3.422 | 3.463 | 3.202 | 2.869 | 2.067 | 3.543 | 4.043 | 3.291 | 2.705 |
| 2014 | 3.525 | 3.315 | 3.818 | 0 | 0 | 0 | 0 | 0 | 0 | 0 | 0 | 0 |

CASTELLÓN



| | | | | | | | | | | | | |
|------|-------|-------|-------|-------|-------|-------|-------|-------|-------|-------|-------|-------|
| 2010 | 988 | 1.145 | 1.320 | 1.059 | 1.076 | 927 | 925 | 726 | 1.370 | 2.045 | 1.841 | 1.001 |
| 2011 | 1.019 | 1.191 | 1.295 | 1.043 | 1.030 | 1.051 | 964 | 1.051 | 1.280 | 1.574 | 1.122 | 695 |
| 2012 | 704 | 750 | 1.229 | 1.132 | 1.094 | 1.247 | 1.095 | 1.026 | 1.251 | 1.872 | 1.880 | 802 |
| 2013 | 1.078 | 1.043 | 1.089 | 1.112 | 1.193 | 1.549 | 1.074 | 1.060 | 1.225 | 1.620 | 1.549 | 763 |
| 2014 | 1.030 | 1.084 | 1.236 | 0 | 0 | 0 | 0 | 0 | 0 | 0 | 0 | 0 |

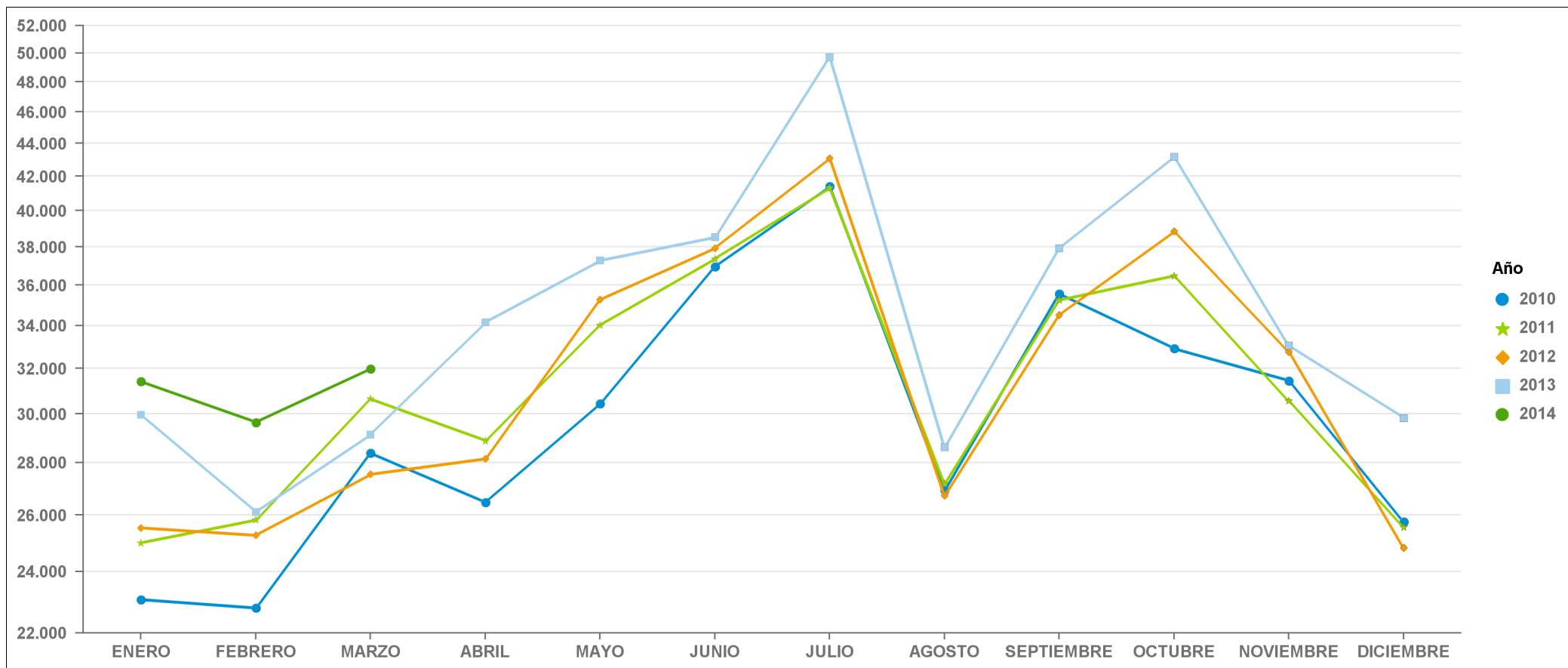
VALENCIA



| | | | | | | | | | | | | |
|------|-------|-------|-------|-------|-------|-------|-------|-------|-------|-------|-------|-------|
| 2010 | 4.479 | 5.421 | 6.026 | 4.648 | 5.710 | 4.440 | 4.871 | 2.819 | 6.680 | 7.397 | 5.823 | 4.232 |
| 2011 | 4.899 | 5.506 | 5.094 | 4.201 | 4.887 | 4.107 | 4.600 | 2.700 | 5.230 | 6.557 | 4.361 | 3.046 |
| 2012 | 3.622 | 3.377 | 4.357 | 3.877 | 4.598 | 4.471 | 4.297 | 2.579 | 5.193 | 7.165 | 5.845 | 3.774 |
| 2013 | 4.968 | 4.357 | 4.444 | 3.997 | 4.453 | 4.639 | 4.211 | 2.591 | 5.480 | 7.088 | 5.176 | 4.094 |
| 2014 | 4.721 | 4.769 | 5.244 | 0 | 0 | 0 | 0 | 0 | 0 | 0 | 0 | 0 |

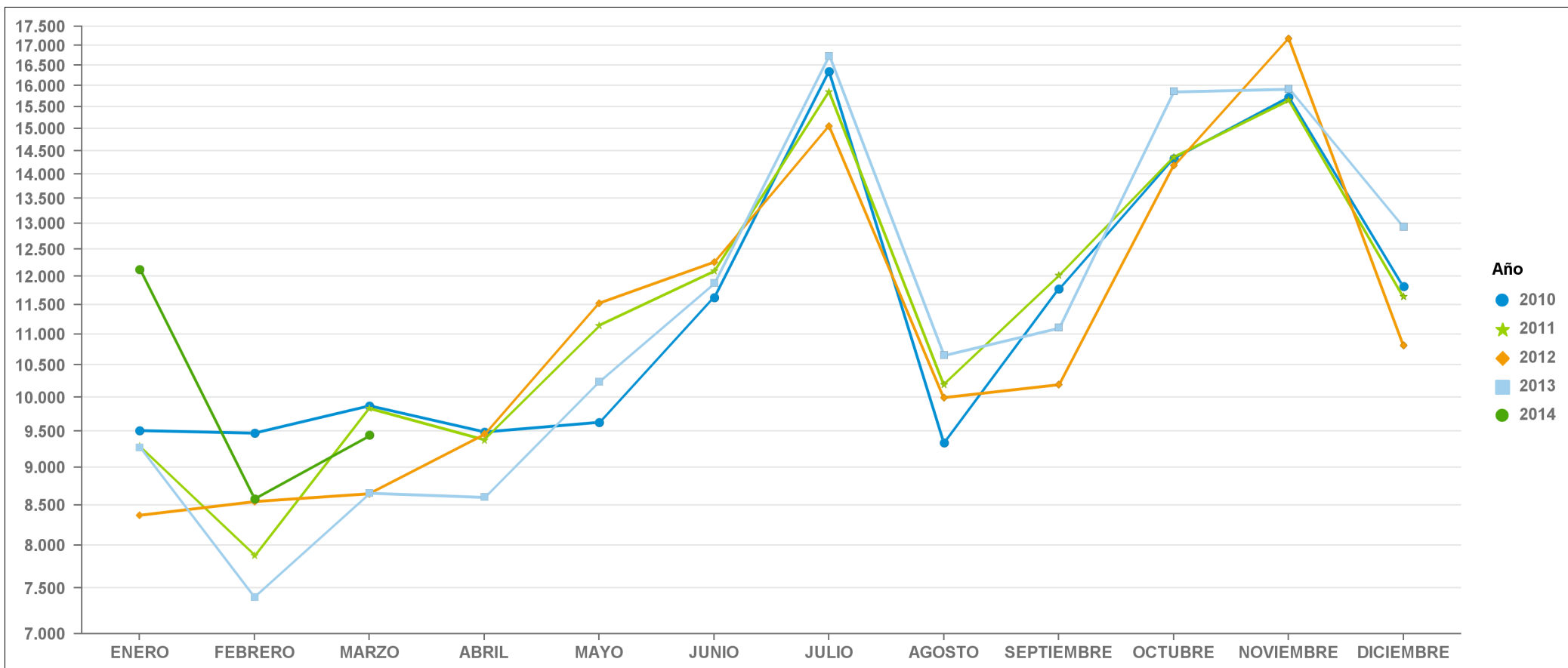
**ESTADÍSTICA COMUNIDAD VALENCIANA
SEGUIMIENTO PROVINCIAL DE LA CONTRATACIÓN INDEFINIDA
PERÍODO 2010 - 2014**

ALICANTE



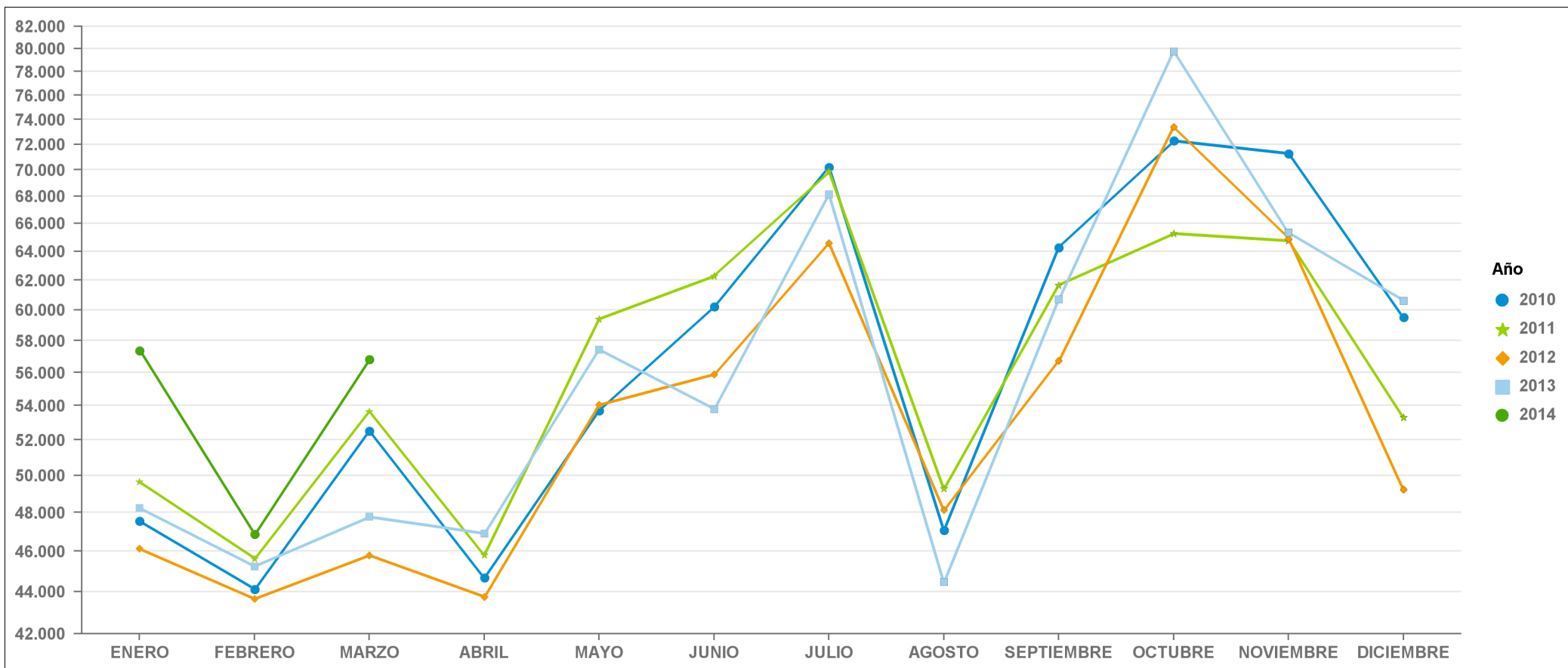
| | | | | | | | | | | | | |
|------|--------|--------|--------|--------|--------|--------|--------|--------|--------|--------|--------|--------|
| 2010 | 23.064 | 22.791 | 28.380 | 26.464 | 30.451 | 41.400 | 36.951 | 26.921 | 35.562 | 32.905 | 31.442 | 25.759 |
| 2011 | 24.995 | 25.816 | 30.642 | 28.885 | 34.020 | 41.319 | 37.371 | 27.178 | 35.246 | 36.482 | 30.560 | 25.560 |
| 2012 | 25.530 | 25.261 | 27.541 | 28.153 | 35.266 | 43.088 | 37.934 | 26.724 | 34.510 | 38.845 | 32.766 | 24.818 |
| 2013 | 29.972 | 26.105 | 29.140 | 34.152 | 37.275 | 49.729 | 38.520 | 28.611 | 37.927 | 43.182 | 33.049 | 29.829 |
| 2014 | 31.407 | 29.648 | 31.988 | 0 | 0 | 0 | 0 | 0 | 0 | 0 | 0 | 0 |

CASTELLÓN



| | | | | | | | | | | | | |
|------|--------|-------|-------|-------|--------|--------|--------|--------|--------|--------|--------|--------|
| 2010 | 9.510 | 9.473 | 9.874 | 9.489 | 9.630 | 16.344 | 11.627 | 9.342 | 11.776 | 14.333 | 15.729 | 11.821 |
| 2011 | 9.294 | 7.876 | 9.834 | 9.376 | 11.144 | 15.852 | 12.099 | 10.194 | 12.023 | 14.360 | 15.653 | 11.638 |
| 2012 | 8.369 | 8.544 | 8.646 | 9.459 | 11.523 | 15.052 | 12.265 | 9.994 | 10.192 | 14.183 | 17.175 | 10.817 |
| 2013 | 9.272 | 7.400 | 8.659 | 8.604 | 10.236 | 16.735 | 11.884 | 10.654 | 11.107 | 15.859 | 15.923 | 12.931 |
| 2014 | 12.127 | 8.582 | 9.445 | 0 | 0 | 0 | 0 | 0 | 0 | 0 | 0 | 0 |

VALENCIA



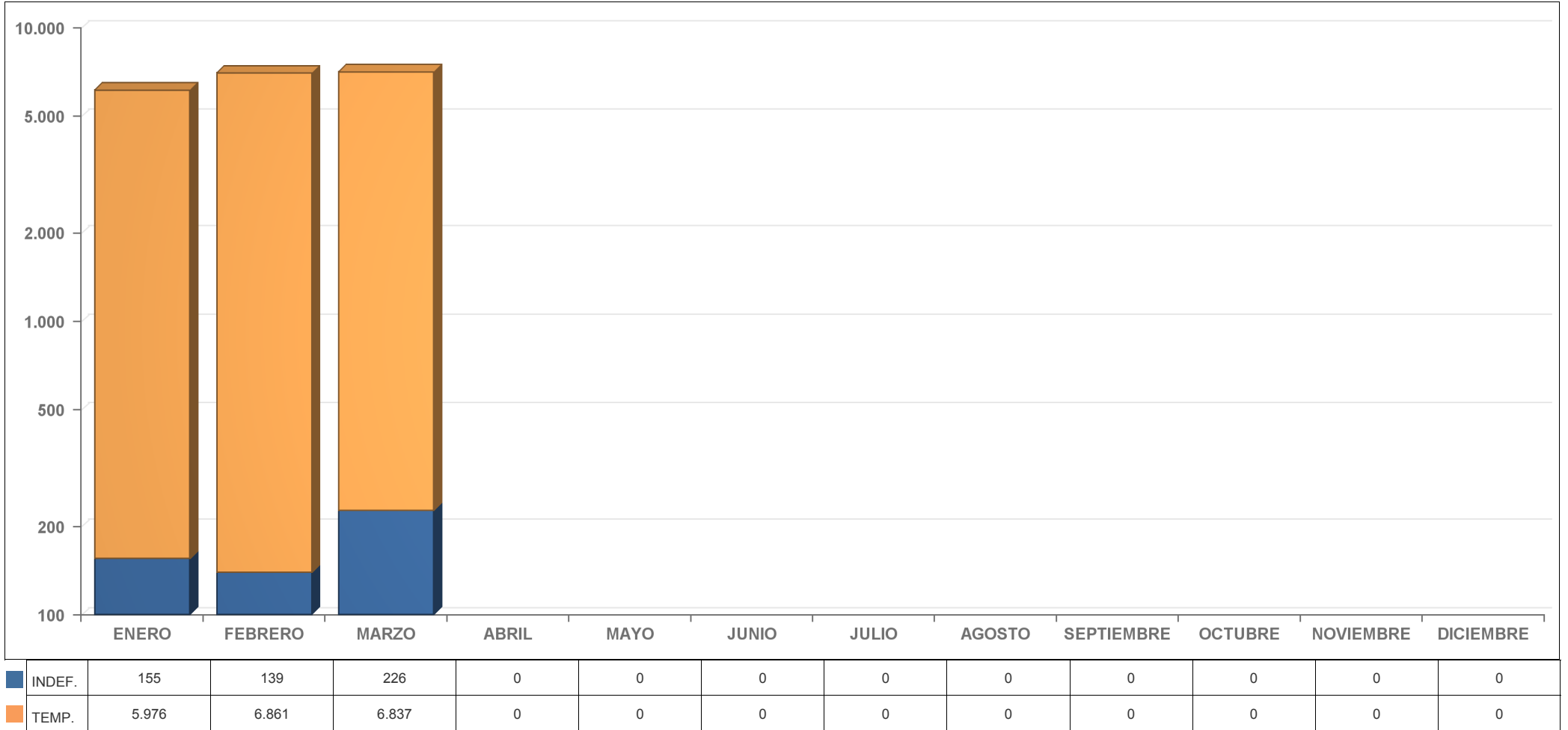
| | | | | | | | | | | | | |
|------|--------|--------|--------|--------|--------|--------|--------|--------|--------|--------|--------|--------|
| 2010 | 47.549 | 44.105 | 52.497 | 44.684 | 53.689 | 70.211 | 60.227 | 47.084 | 64.274 | 72.279 | 71.270 | 59.519 |
| 2011 | 49.648 | 45.624 | 53.639 | 45.821 | 59.394 | 69.866 | 62.280 | 49.275 | 61.656 | 65.263 | 64.742 | 53.309 |
| 2012 | 46.119 | 43.633 | 45.793 | 43.737 | 54.028 | 64.557 | 55.888 | 48.141 | 56.727 | 73.392 | 64.888 | 49.239 |
| 2013 | 48.239 | 45.222 | 47.768 | 46.901 | 57.437 | 68.121 | 53.783 | 44.453 | 60.699 | 79.761 | 65.332 | 60.605 |
| 2014 | 57.364 | 46.883 | 56.804 | 0 | 0 | 0 | 0 | 0 | 0 | 0 | 0 | 0 |

**ESTADÍSTICA COMUNIDAD VALENCIANA
SEGUIMIENTO PROVINCIAL DE LA CONTRATACIÓN TEMPORAL
PERÍODO 2010 - 2014**

ESTADÍSTICA PROVINCIA DE VALENCIA

EVOLUCIÓN MENSUAL DE LA CONTRATACIÓN TEMPORAL E INDEFINIDA POR SECTORES ECONÓMICOS AÑO 2014

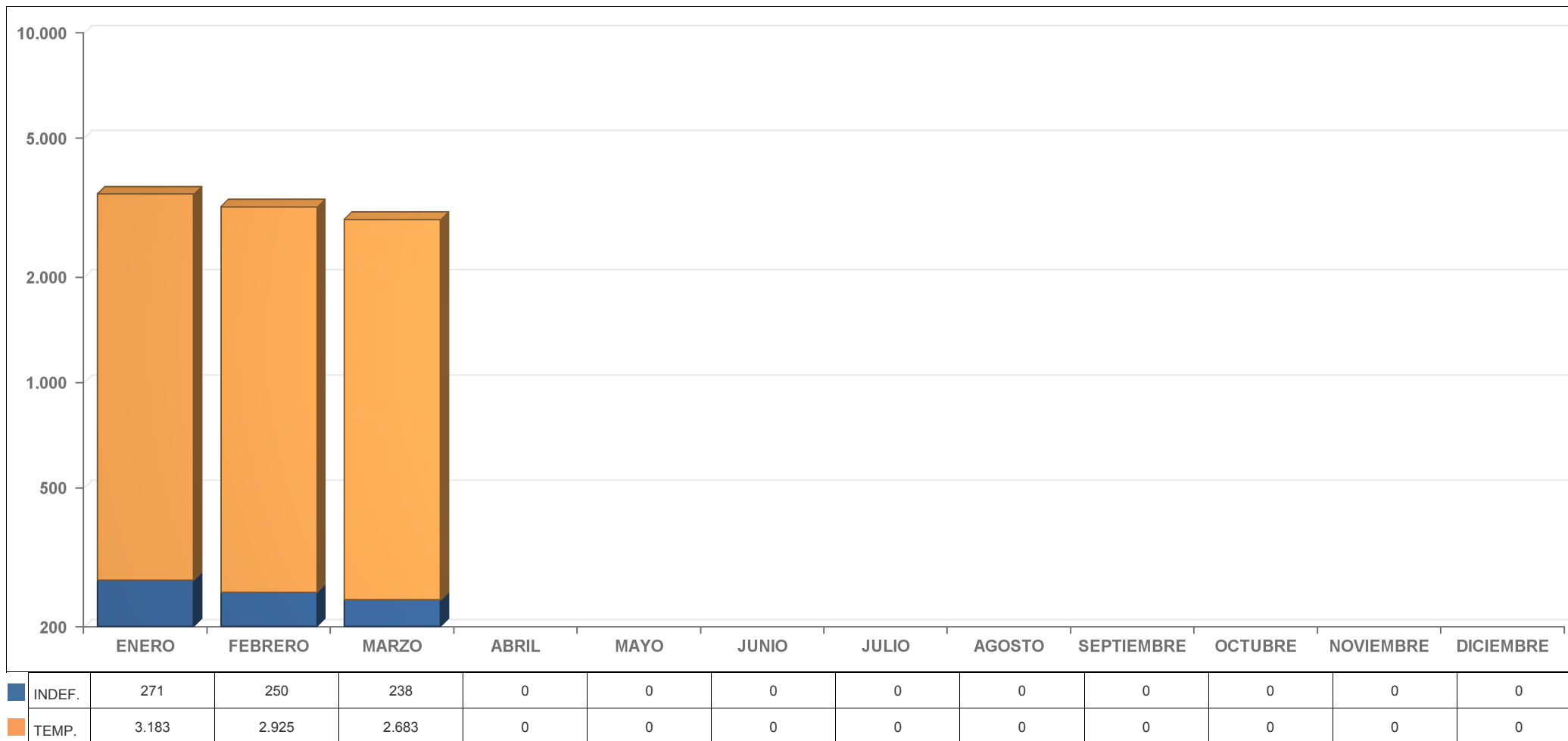
Agricultura



ESTADÍSTICA PROVINCIA DE VALENCIA

EVOLUCIÓN MENSUAL DE LA CONTRATACIÓN TEMPORAL E INDEFINIDA POR SECTORES ECONÓMICOS AÑO 2014

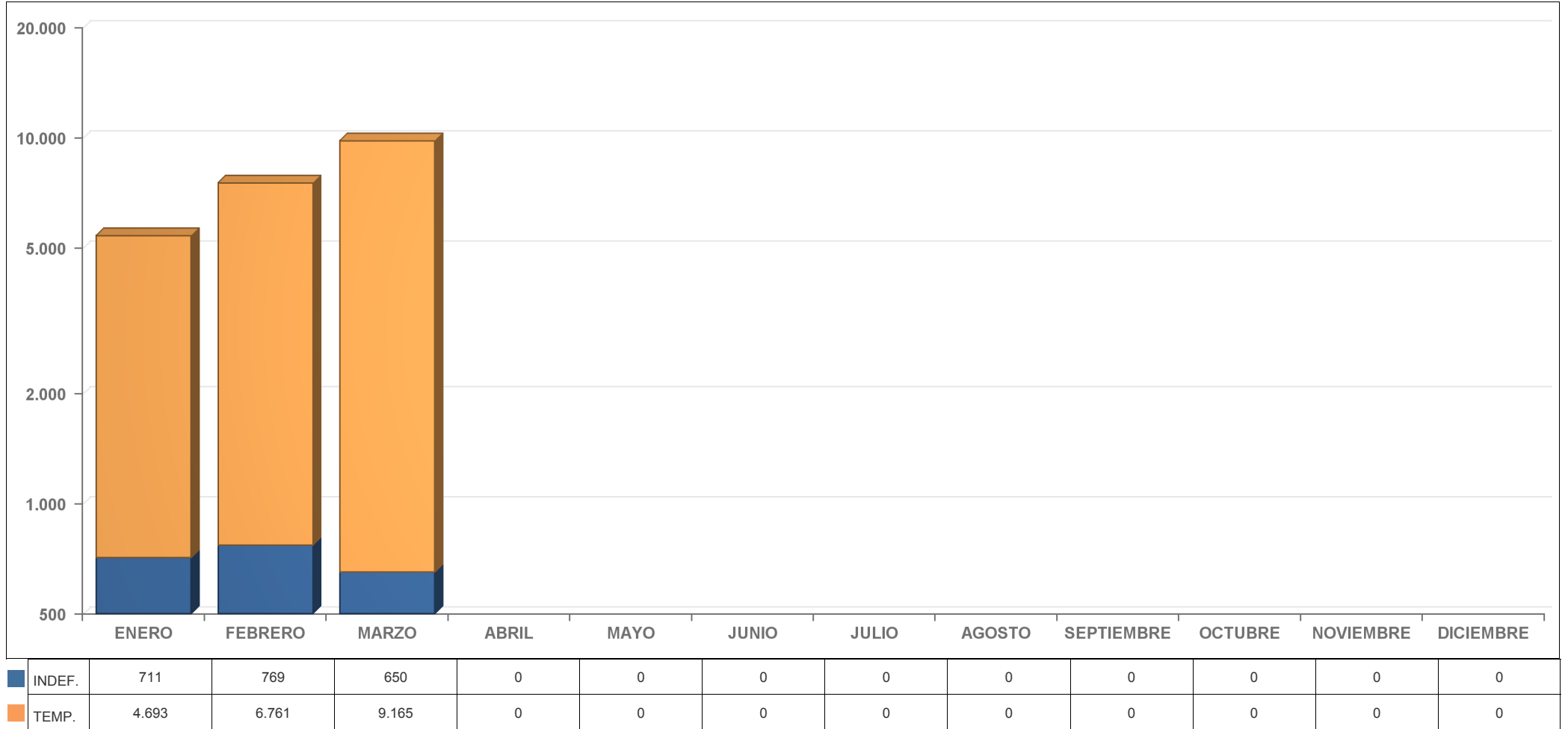
Construcción



ESTADÍSTICA PROVINCIA DE VALENCIA

EVOLUCIÓN MENSUAL DE LA CONTRATACIÓN TEMPORAL E INDEFINIDA POR SECTORES ECONÓMICOS AÑO 2014

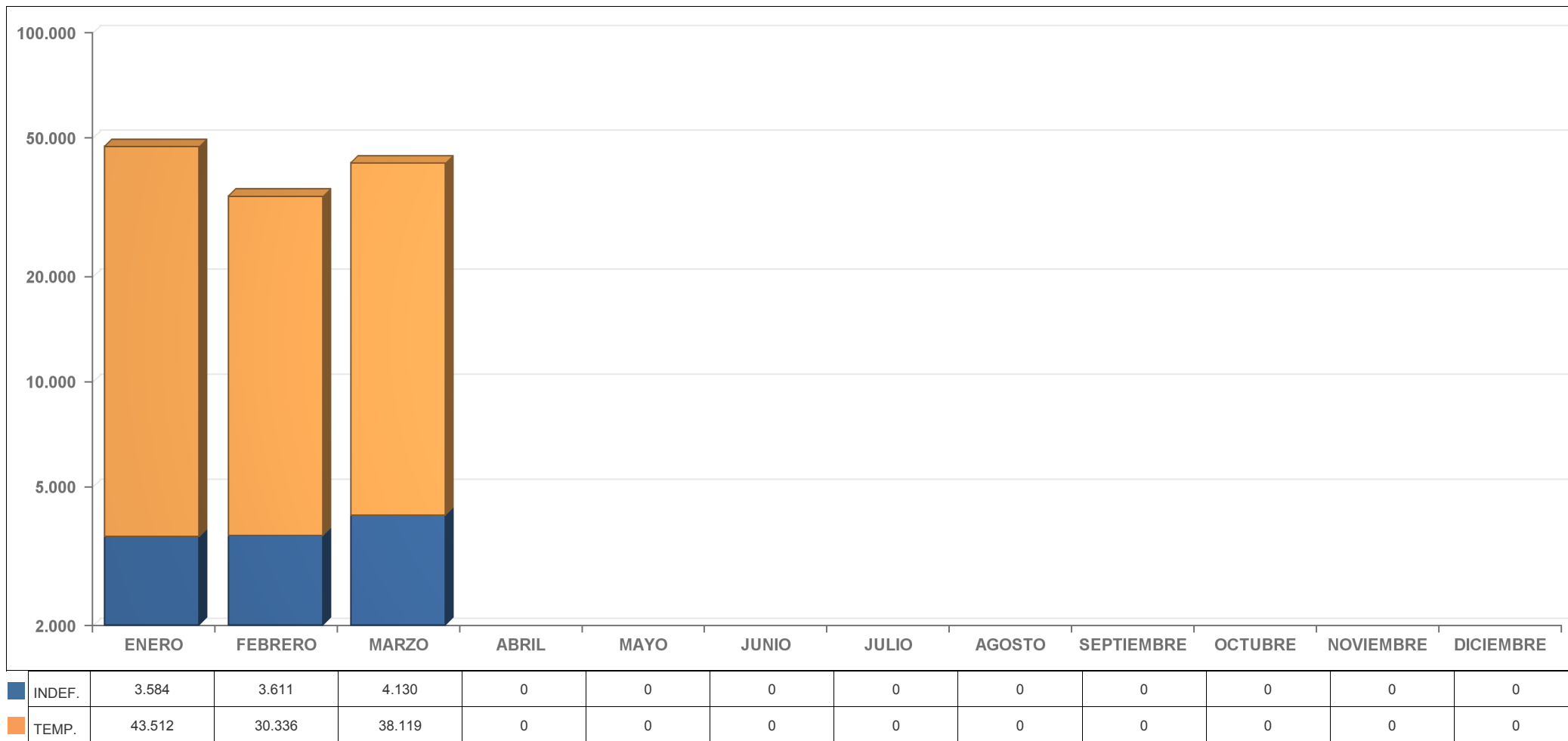
Industria



ESTADÍSTICA PROVINCIA DE VALENCIA

EVOLUCIÓN MENSUAL DE LA CONTRATACIÓN TEMPORAL E INDEFINIDA POR SECTORES ECONÓMICOS AÑO 2014

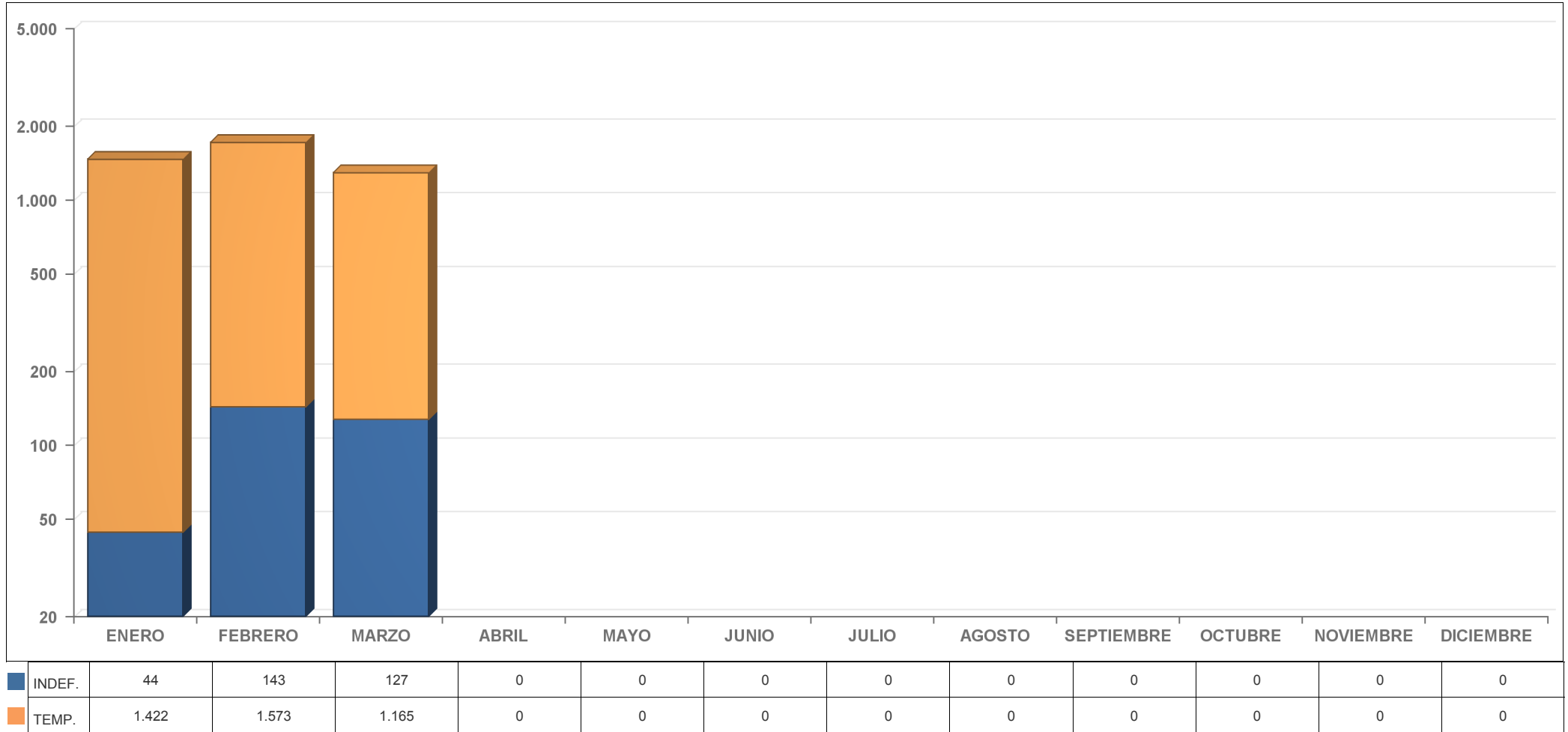
Servicios



ESTADÍSTICA PROVINCIA DE CASTELLÓN

EVOLUCIÓN MENSUAL DE LA CONTRATACIÓN TEMPORAL E INDEFINIDA POR SECTORES ECONÓMICOS AÑO 2014

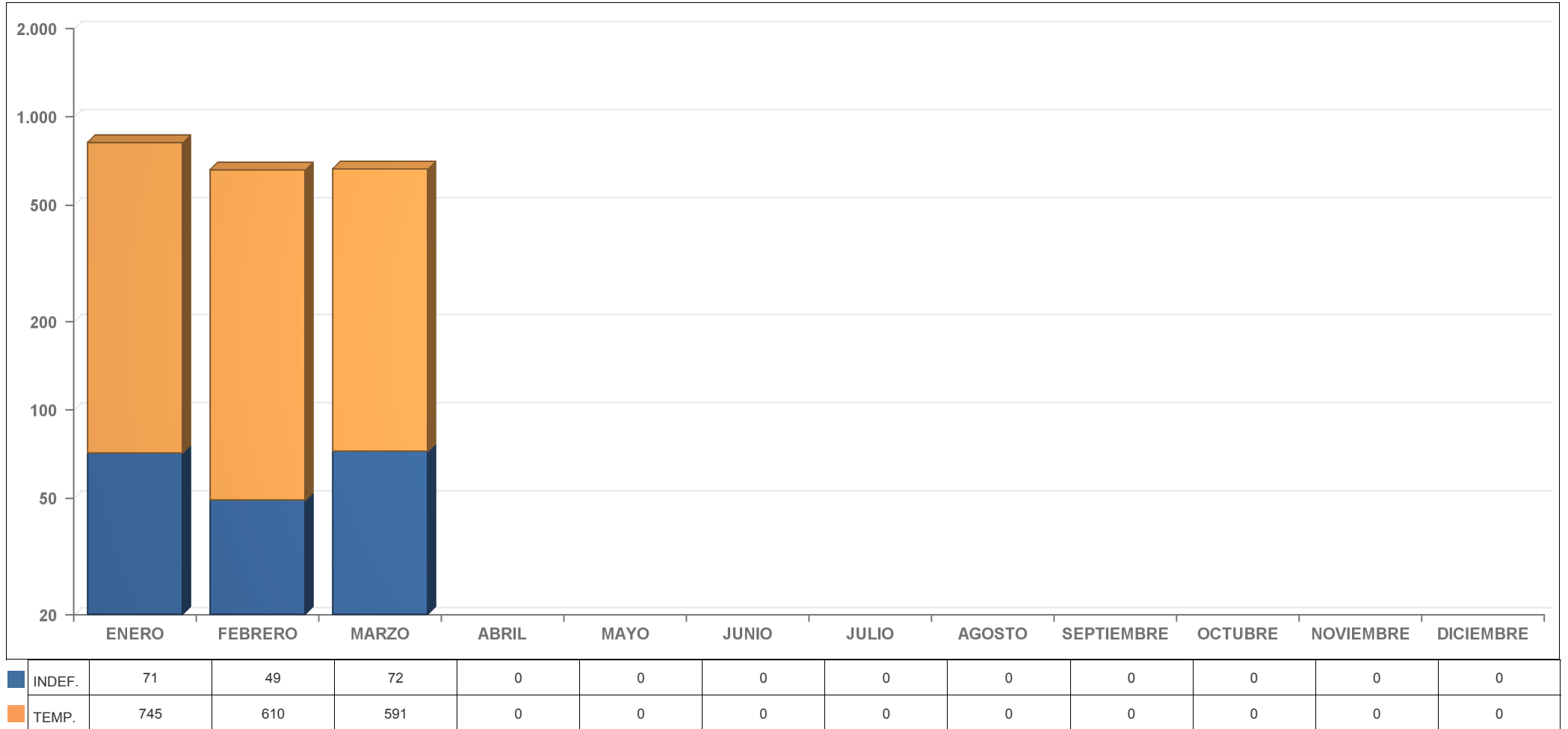
Agricultura



ESTADÍSTICA PROVINCIA DE CASTELLÓN

EVOLUCIÓN MENSUAL DE LA CONTRATACIÓN TEMPORAL E INDEFINIDA POR SECTORES ECONÓMICOS AÑO 2014

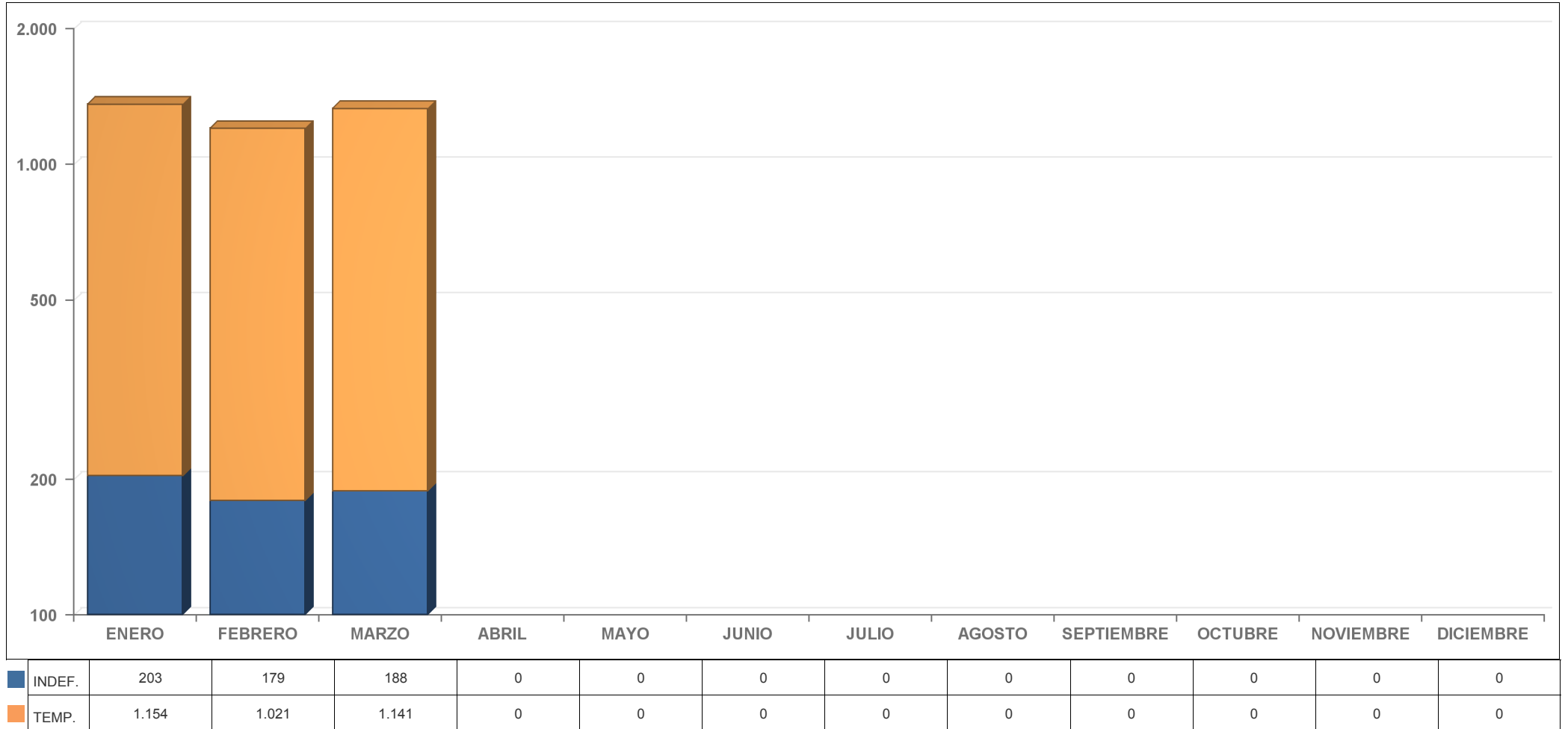
Construcción



ESTADÍSTICA PROVINCIA DE CASTELLÓN

EVOLUCIÓN MENSUAL DE LA CONTRATACIÓN TEMPORAL E INDEFINIDA POR SECTORES ECONÓMICOS AÑO 2014

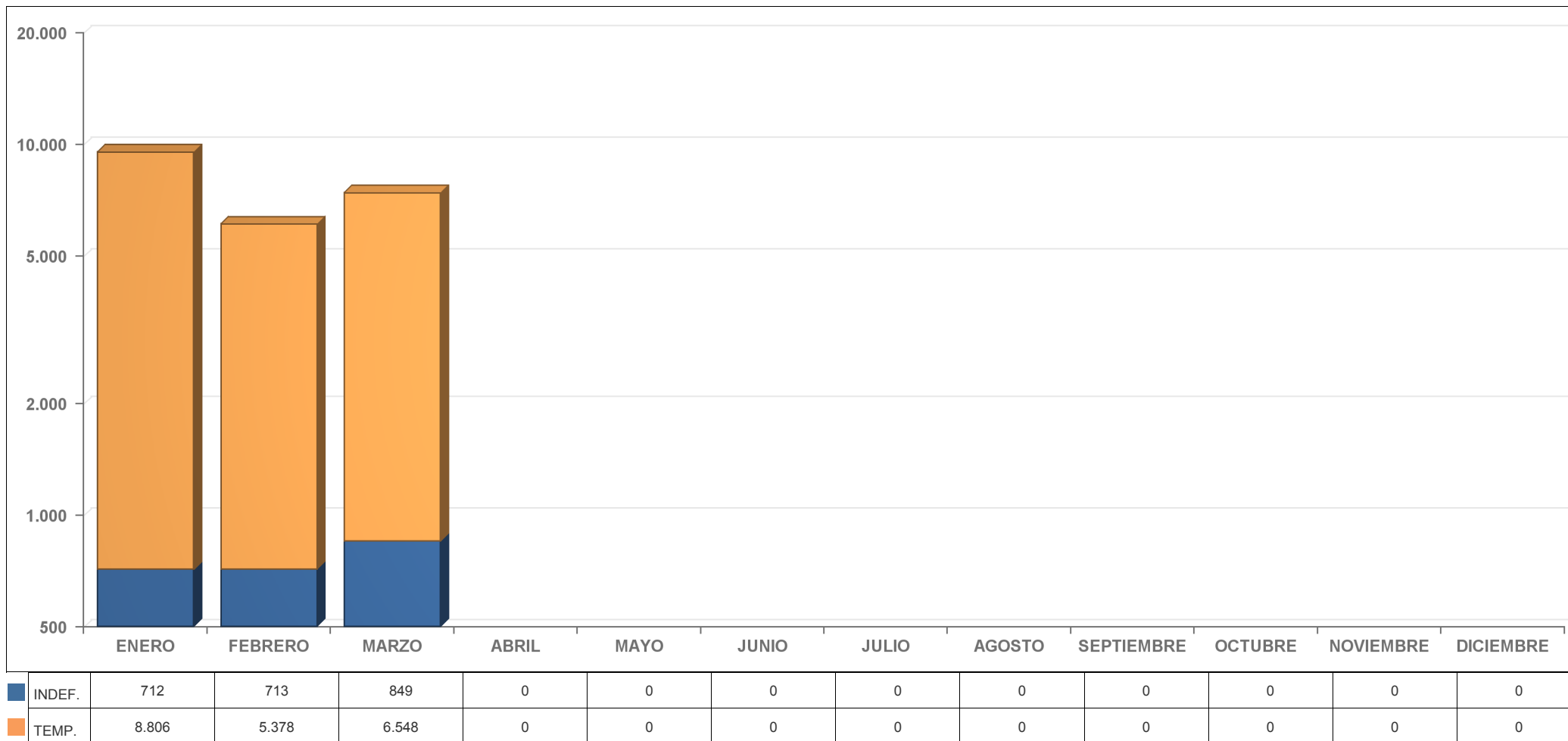
Industria



ESTADÍSTICA PROVINCIA DE CASTELLÓN

EVOLUCIÓN MENSUAL DE LA CONTRATACIÓN TEMPORAL E INDEFINIDA POR SECTORES ECONÓMICOS AÑO 2014

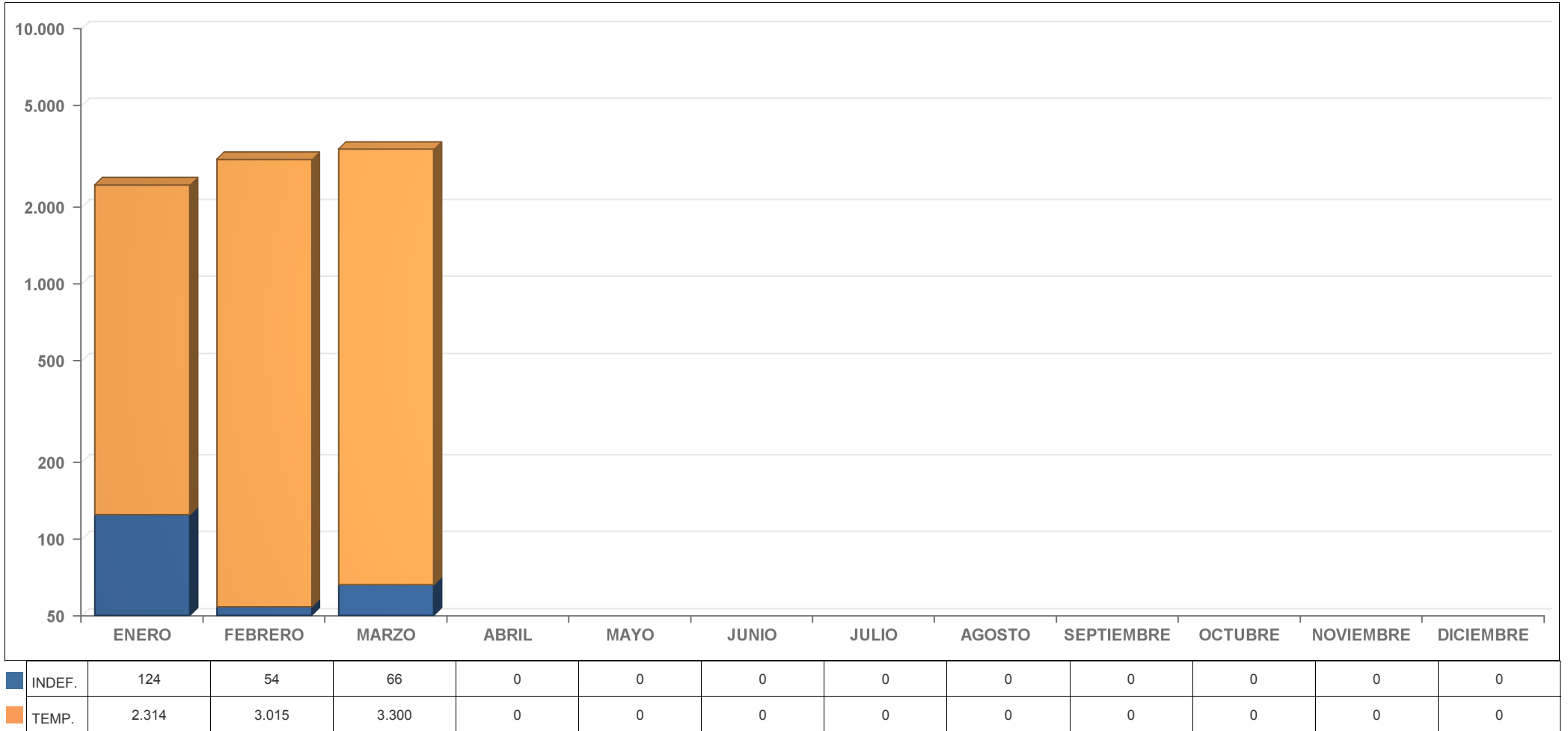
Servicios



ESTADÍSTICA PROVINCIA DE ALICANTE

EVOLUCIÓN MENSUAL DE LA CONTRATACIÓN TEMPORAL E INDEFINIDA POR SECTORES ECONÓMICOS AÑO 2014

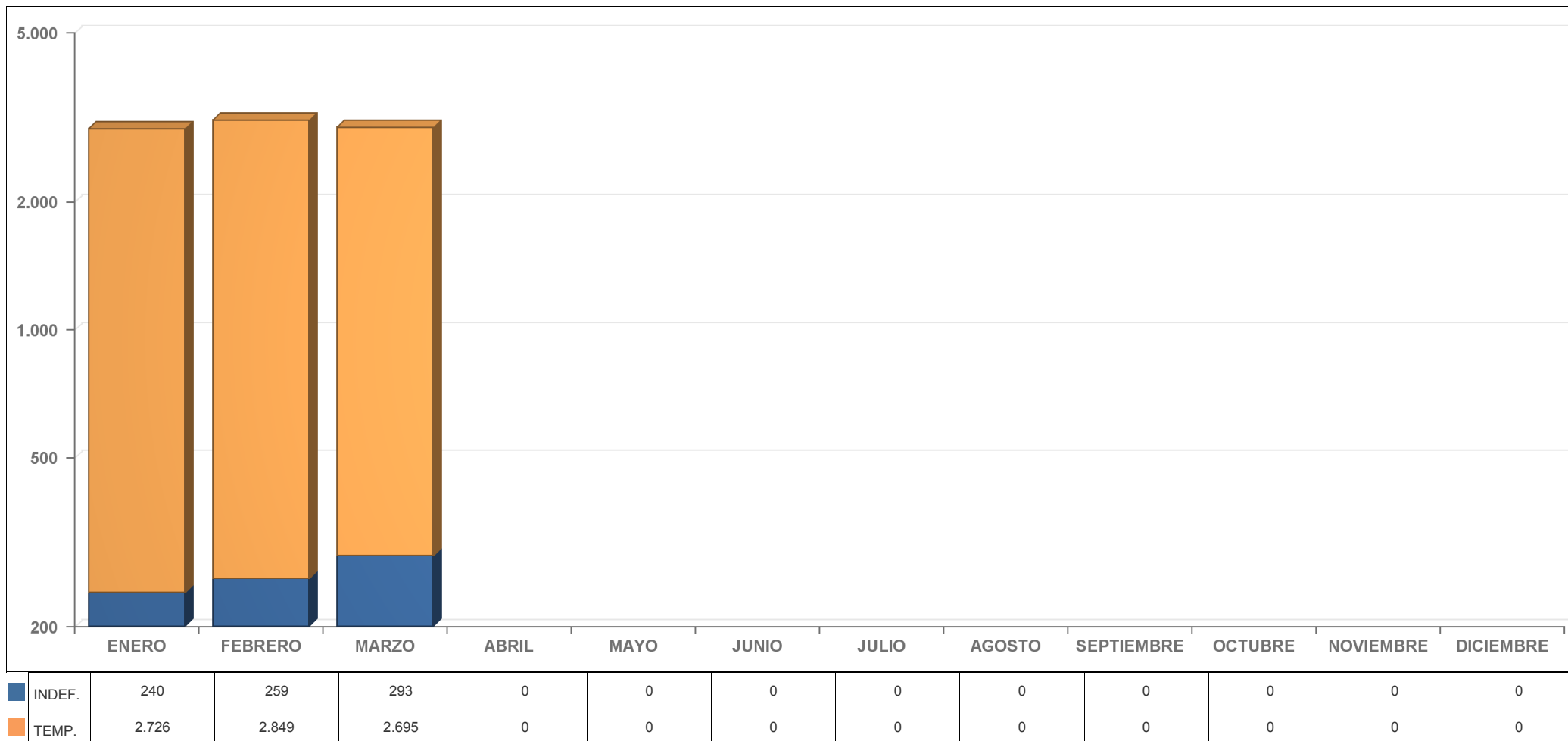
Agricultura



ESTADÍSTICA PROVINCIA DE ALICANTE

EVOLUCIÓN MENSUAL DE LA CONTRATACIÓN TEMPORAL E INDEFINIDA POR SECTORES ECONÓMICOS AÑO 2014

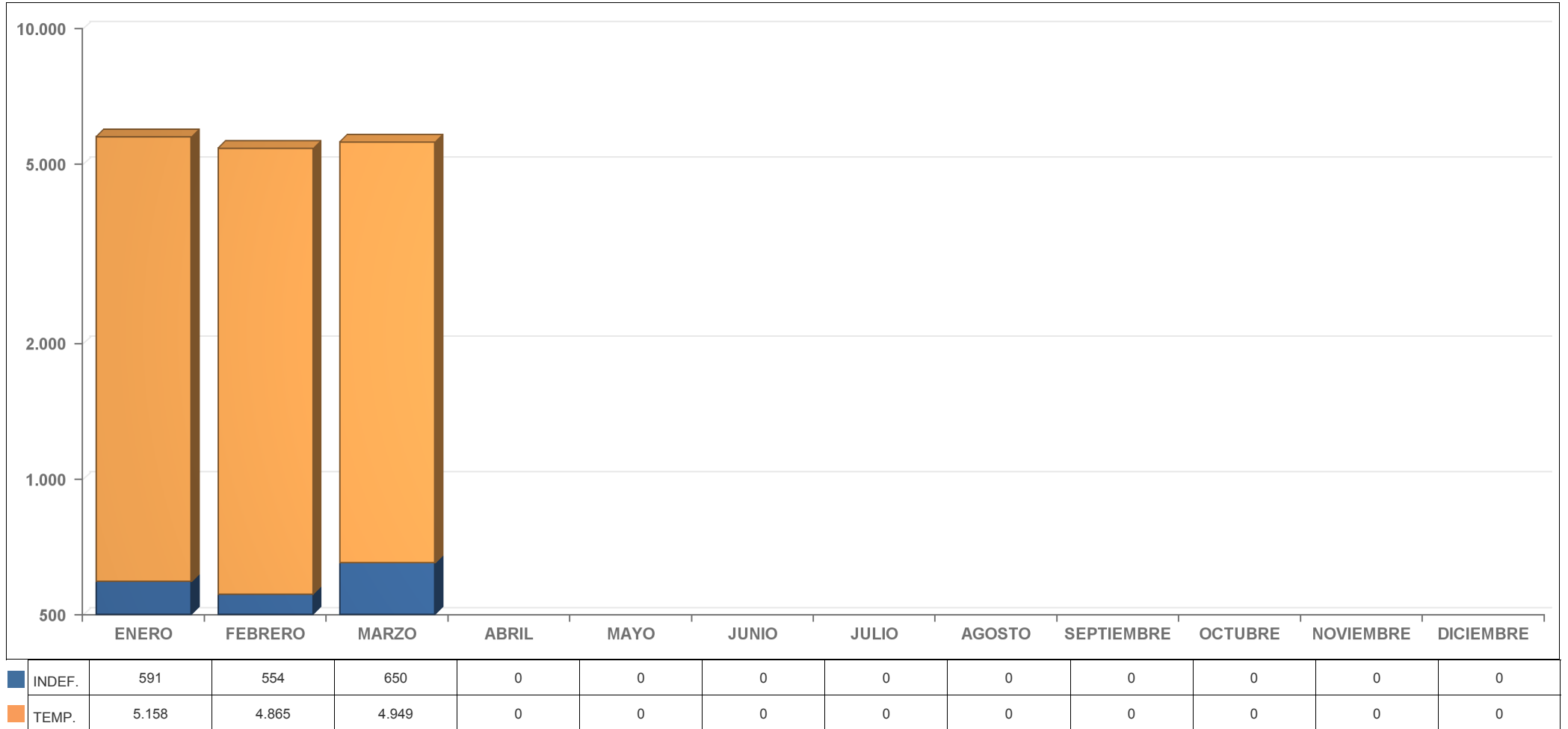
Construcción



ESTADÍSTICA PROVINCIA DE ALICANTE

EVOLUCIÓN MENSUAL DE LA CONTRATACIÓN TEMPORAL E INDEFINIDA POR SECTORES ECONÓMICOS AÑO 2014

Industria



ESTADÍSTICA PROVINCIA DE ALICANTE

EVOLUCIÓN MENSUAL DE LA CONTRATACIÓN TEMPORAL E INDEFINIDA POR SECTORES ECONÓMICOS AÑO 2014

Servicios

