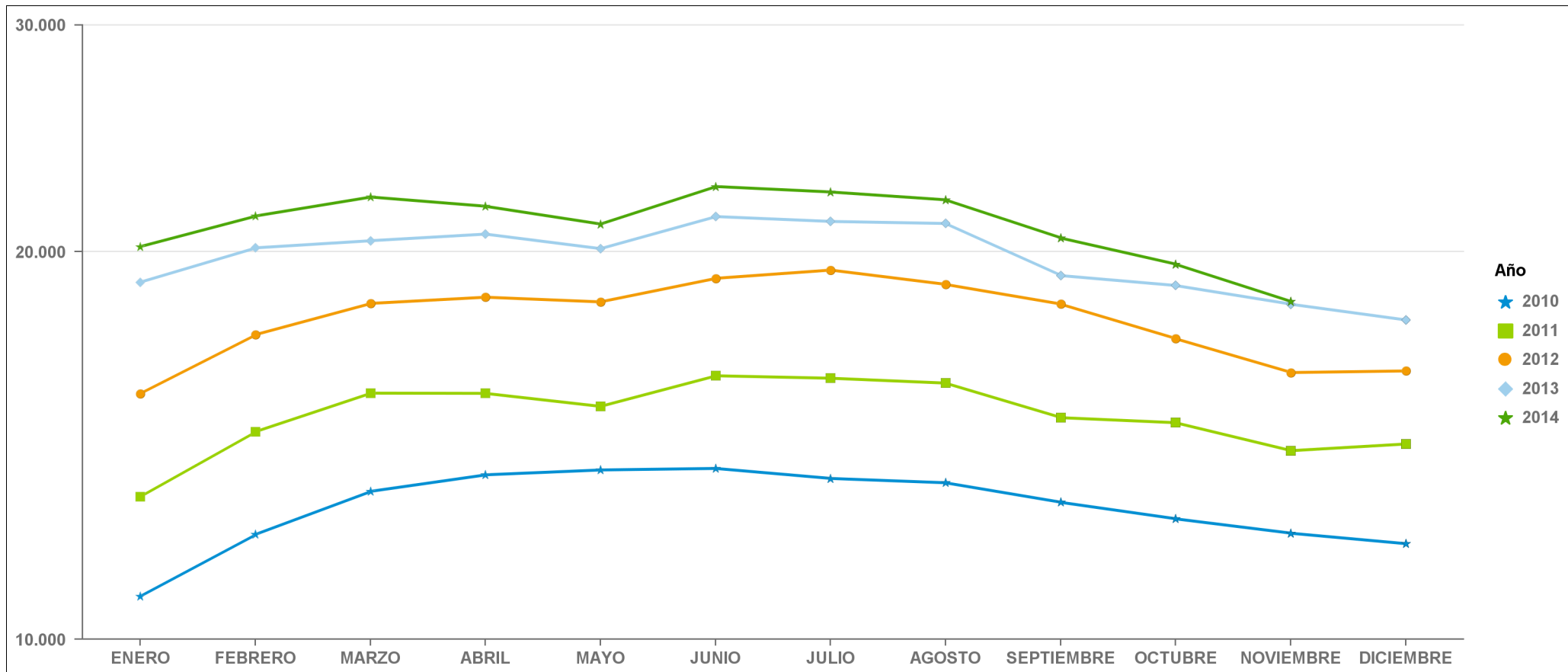
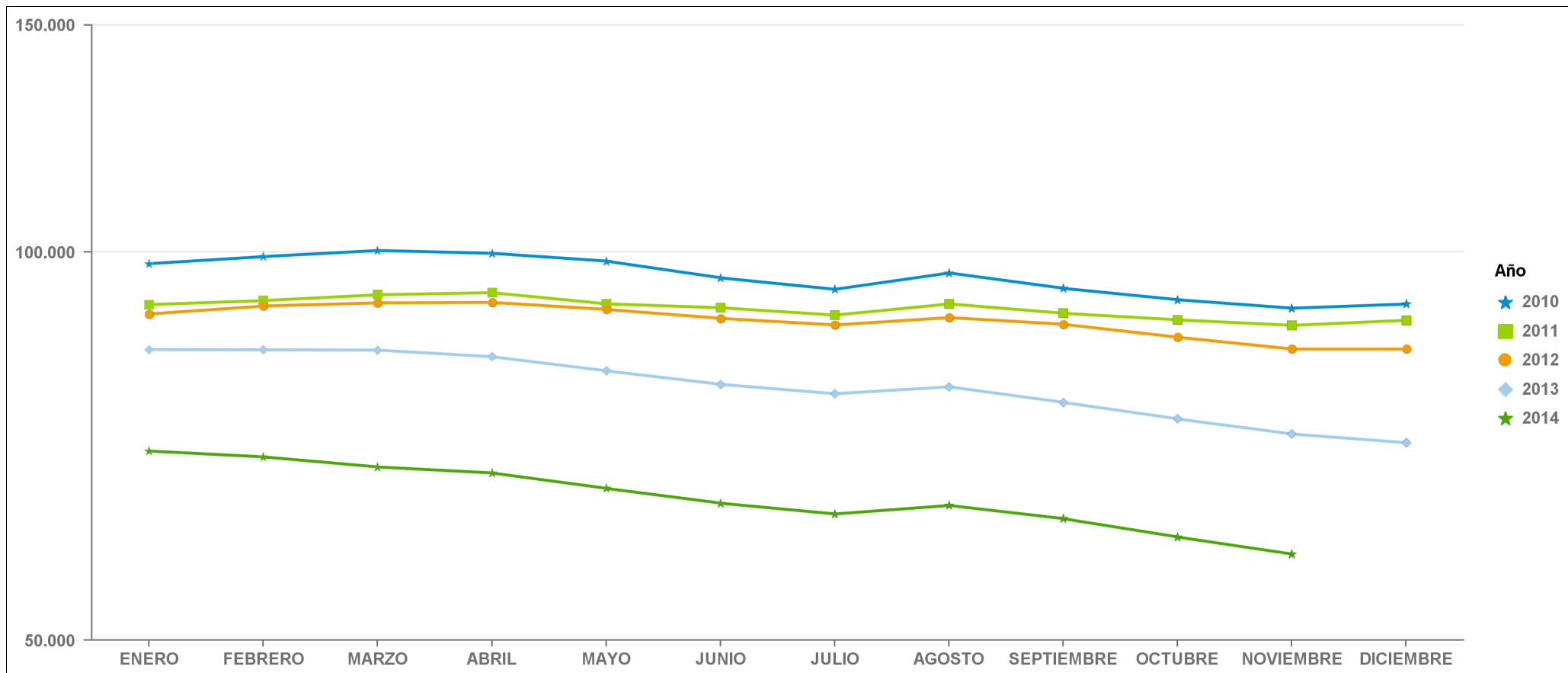


Agricultura



2010	10.797	12.060	13.027	13.419	13.536	13.573	13.332	13.229	12.775	12.403	12.088	11.863
2011	12.902	14.492	15.529	15.523	15.164	16.019	15.949	15.810	14.863	14.729	14.010	14.180
2012	15.515	17.239	18.231	18.436	18.281	19.068	19.353	18.862	18.209	17.117	16.112	16.158
2013	18.936	20.136	20.395	20.639	20.105	21.296	21.110	21.033	19.163	18.824	18.206	17.698
2014	20.180	21.315	22.054	21.691	21.009	22.471	22.252	21.941	20.495	19.554	18.291	0

Construcción

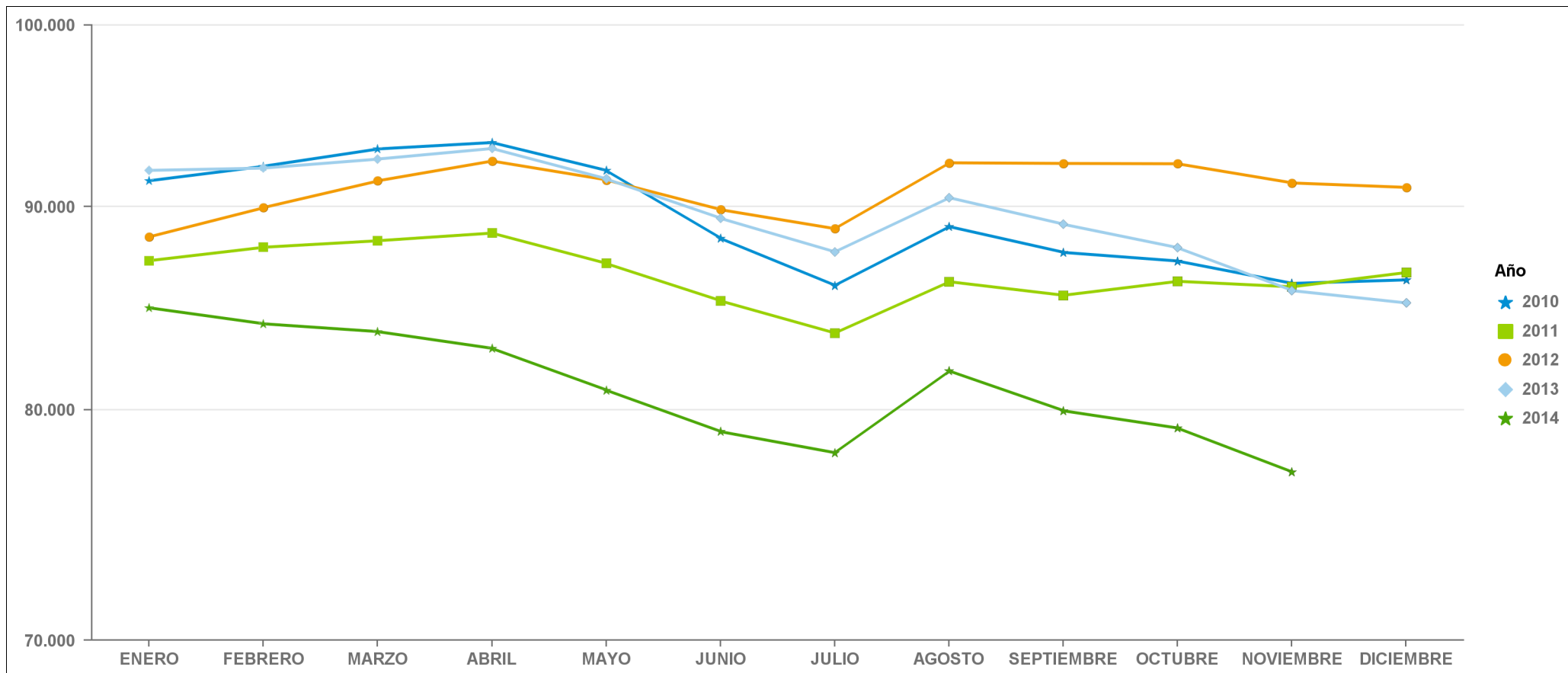


2010	97.944	99.191	100.276	99.775	98.395	95.491	93.556	96.343	93.722	91.835	90.462	91.130
2011	91.041	91.697	92.658	93.002	91.158	90.537	89.344	91.160	89.640	88.599	87.729	88.535
2012	89.532	90.817	91.325	91.400	90.262	88.834	87.792	88.964	87.899	85.889	84.098	84.093
2013	84.013	83.978	83.938	82.945	80.884	78.956	77.646	78.612	76.457	74.233	72.254	71.141
2014	70.097	69.364	68.127	67.404	65.571	63.860	62.642	63.606	62.119	60.117	58.306	0

ESTADÍSTICA COMUNIDAD VALENCIANA

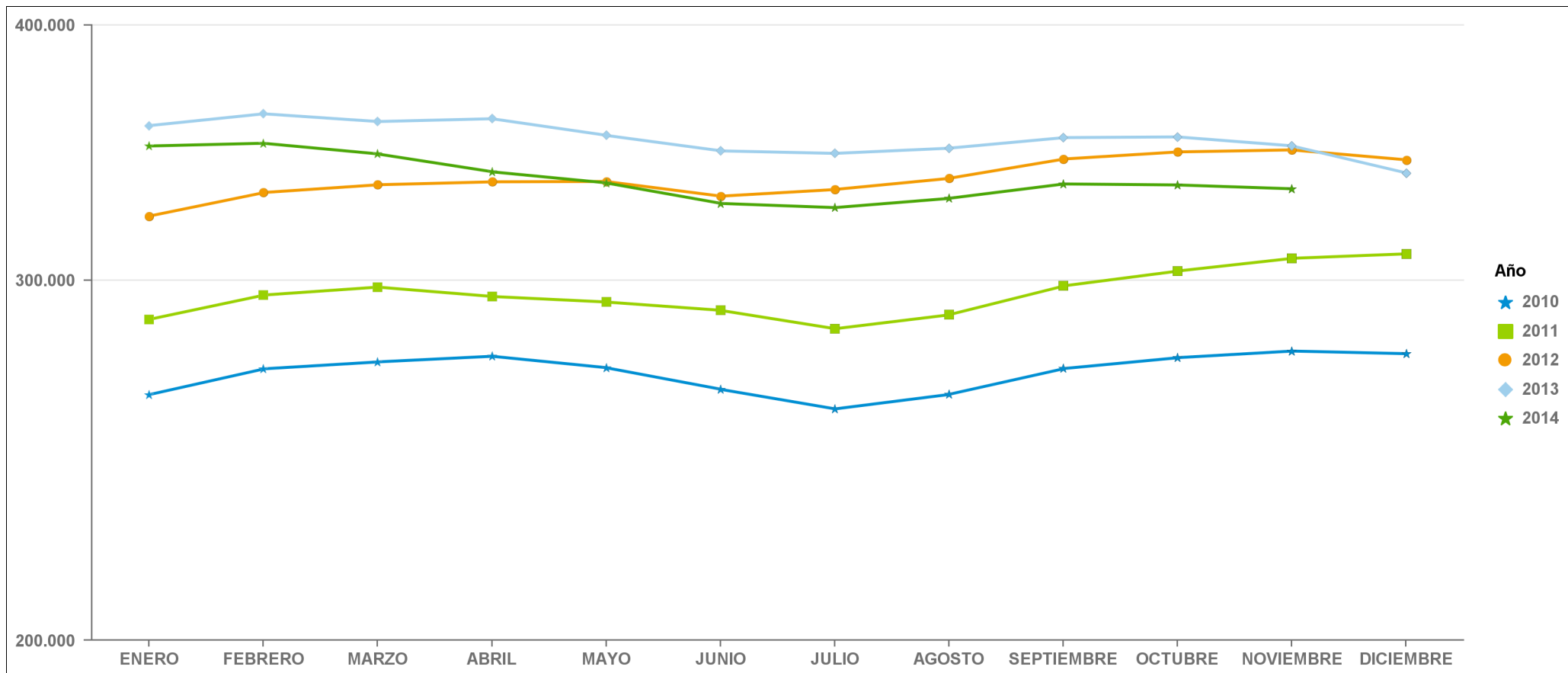
EVOLUCIÓN MENSUAL DEL PARO REGISTRADO POR SECTORES ECONÓMICOS PERÍODO 2010 - 2014

Industria



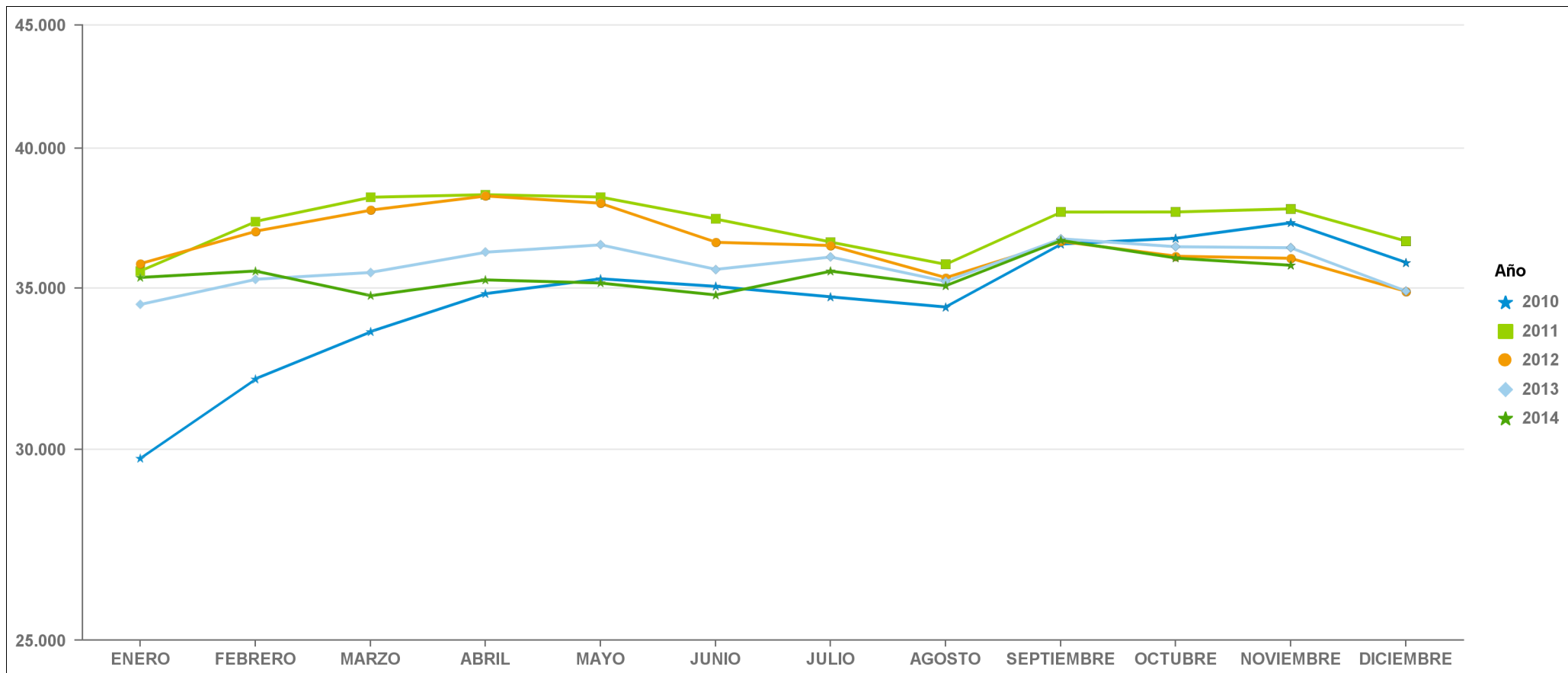
2010	91.363	92.134	93.064	93.412	91.907	88.361	85.980	88.971	87.646	87.208	86.085	86.263
2011	87.226	87.908	88.241	88.635	87.085	85.219	83.637	86.172	85.493	86.191	85.914	86.634
2012	88.437	89.950	91.358	92.417	91.408	89.845	88.856	92.320	92.286	92.268	91.248	91.012
2013	91.915	92.036	92.519	93.091	91.461	89.395	87.668	90.475	89.088	87.883	85.727	85.113
2014	84.878	84.094	83.713	82.903	80.920	78.998	78.034	81.830	79.958	79.159	77.167	0

Servicios



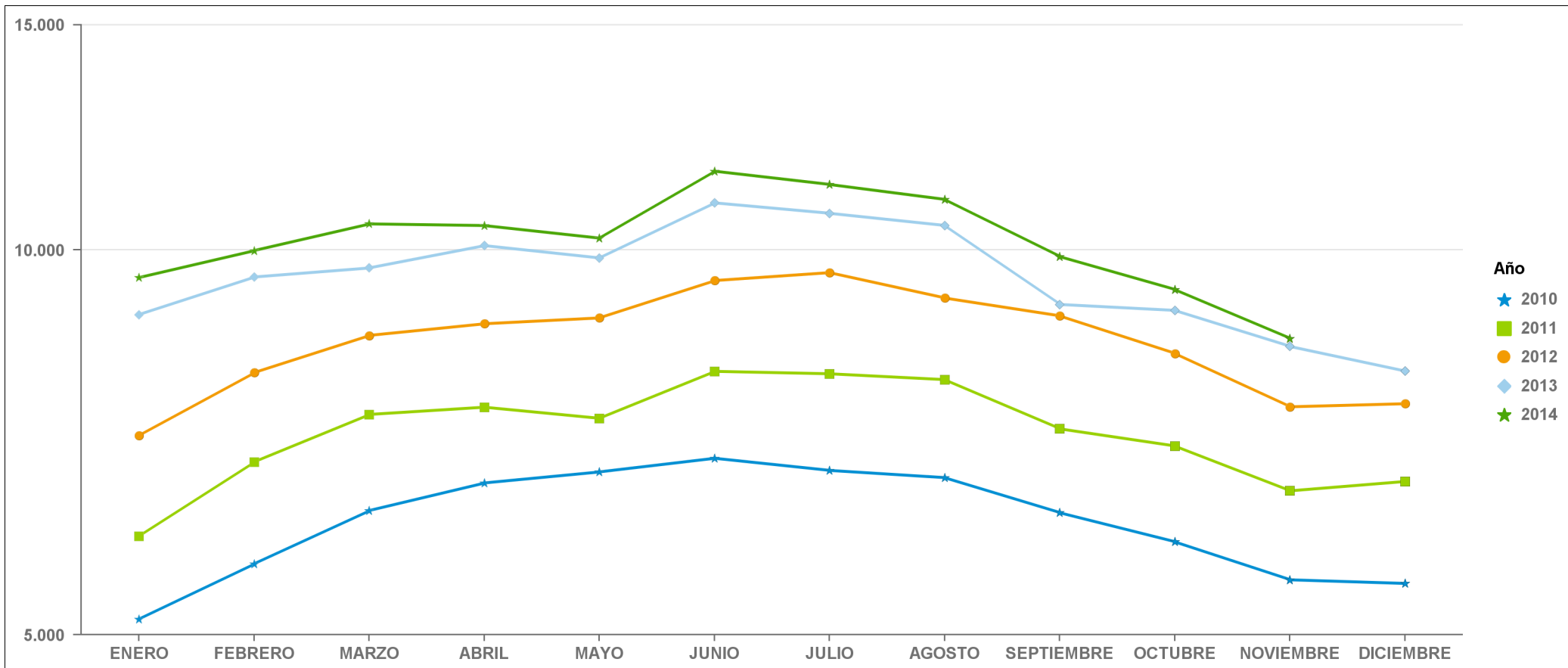
2010	263.725	271.515	273.652	275.404	271.866	265.329	259.525	263.820	271.592	274.960	277.017	276.200
2011	287.060	295.046	297.716	294.582	292.750	290.019	284.059	288.572	298.102	303.151	307.526	309.088
2012	322.486	331.175	334.089	335.197	335.331	329.821	332.317	336.520	343.918	346.687	347.473	343.590
2013	357.103	361.915	358.749	359.905	353.202	347.099	346.106	348.149	352.321	352.600	349.058	338.518
2014	349.013	350.091	345.900	339.006	334.791	327.144	325.601	329.022	334.398	334.021	332.573	0

Sin actividad económica



2010	29.738	32.089	33.569	34.811	35.310	35.054	34.705	34.369	36.502	36.703	37.253	35.859
2011	35.571	37.297	38.171	38.264	38.178	37.386	36.569	35.796	37.634	37.637	37.751	36.599
2012	35.823	36.950	37.703	38.217	37.952	36.562	36.450	35.343	36.595	36.079	36.008	34.882
2013	34.453	35.292	35.524	36.217	36.474	35.627	36.054	35.217	36.686	36.407	36.373	34.890
2014	35.355	35.574	34.742	35.273	35.167	34.767	35.570	35.072	36.630	36.015	35.766	0

Agricultura

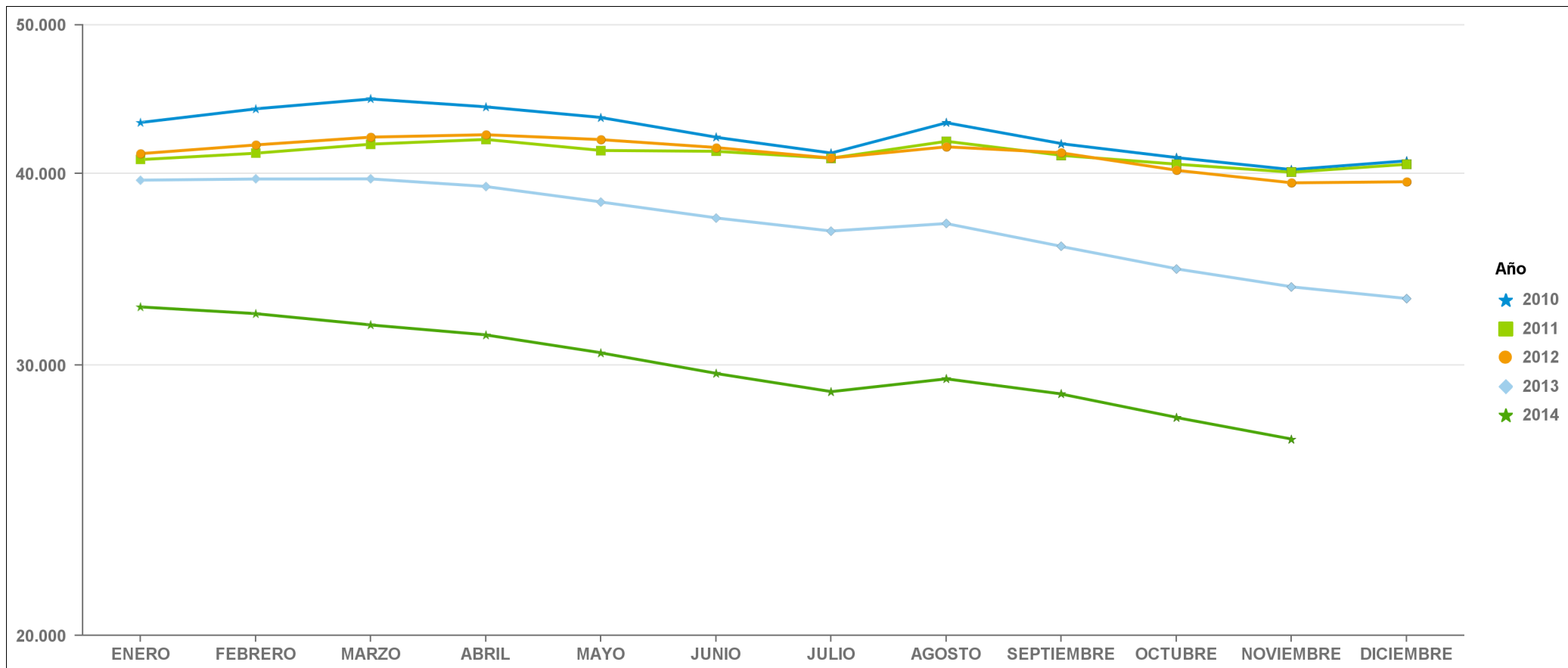


2010	5.143	5.681	6.253	6.572	6.704	6.871	6.722	6.635	6.229	5.911	5.520	5.484
2011	5.971	6.825	7.435	7.533	7.383	8.035	8.000	7.916	7.245	7.024	6.479	6.590
2012	7.158	8.016	8.572	8.754	8.847	9.462	9.599	9.170	8.879	8.298	7.538	7.580
2013	8.900	9.523	9.680	10.078	9.855	10.884	10.681	10.449	9.064	8.967	8.404	8.038
2014	9.513	9.987	10.479	10.448	10.213	11.523	11.250	10.951	9.880	9.310	8.526	0

ESTADÍSTICA PROVINCIA DE VALENCIA

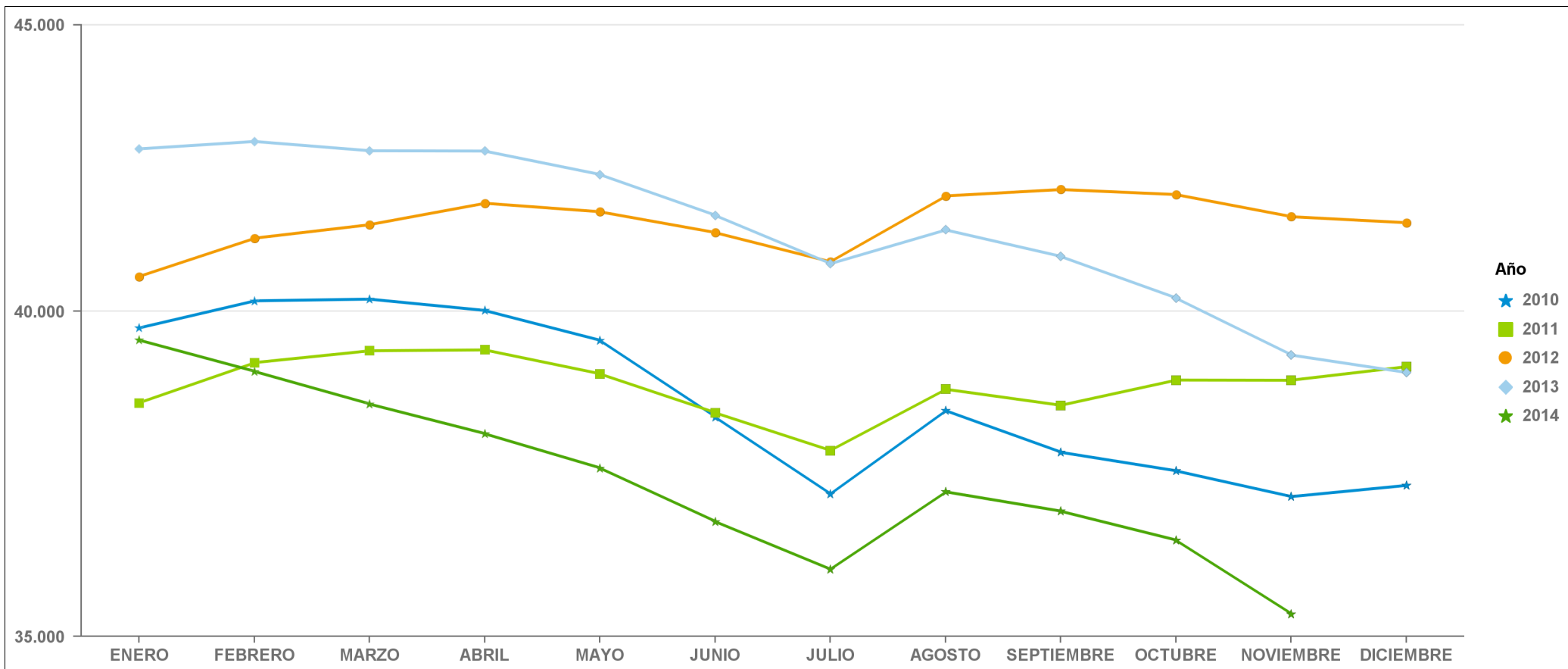
EVOLUCIÓN MENSUAL DEL PARO REGISTRADO POR SECTORES ECONÓMICOS PERÍODO 2010 - 2014

Construcción



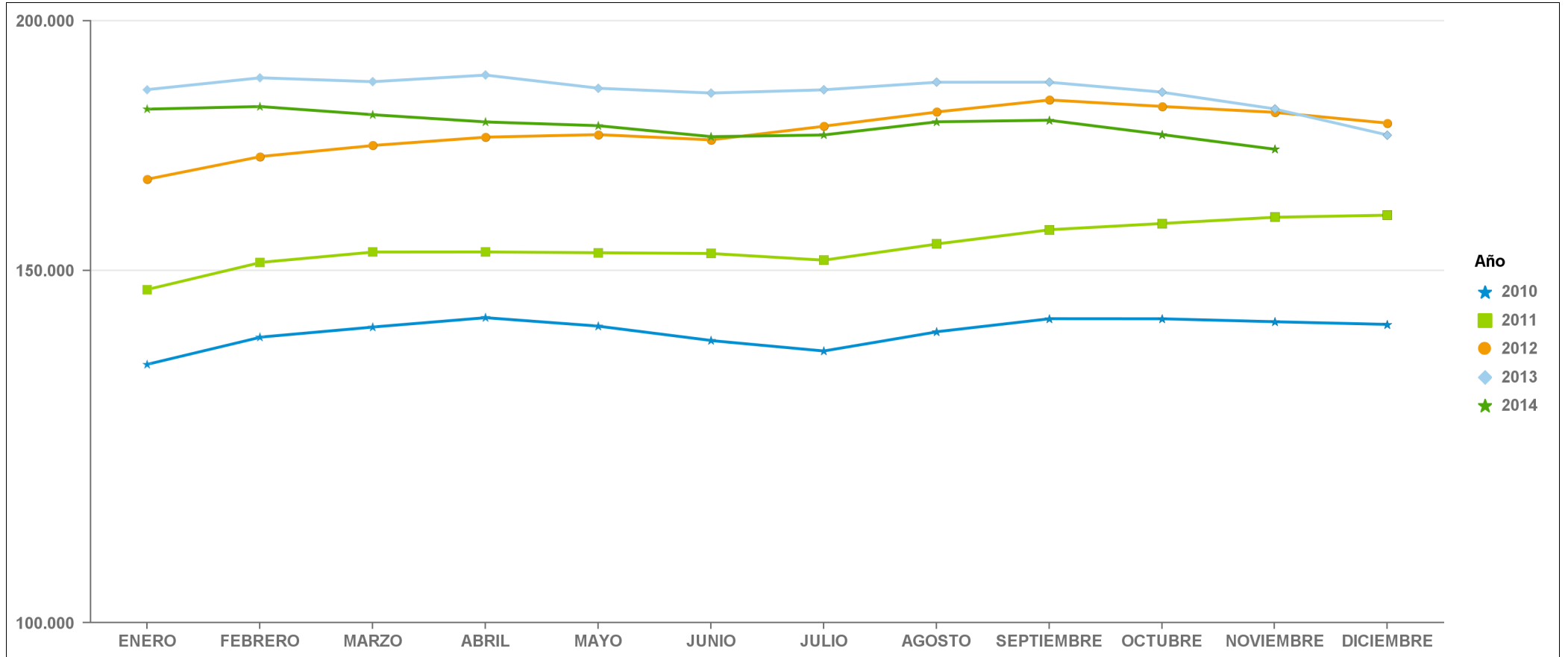
2010	43.178	44.075	44.732	44.206	43.504	42.234	41.242	43.170	41.829	40.964	40.229	40.769
2011	40.841	41.236	41.799	42.098	41.404	41.354	40.928	41.982	41.103	40.562	40.075	40.556
2012	41.208	41.752	42.244	42.395	42.085	41.588	40.933	41.634	41.261	40.193	39.442	39.507
2013	39.603	39.670	39.677	39.226	38.325	37.420	36.689	37.109	35.852	34.668	33.745	33.156
2014	32.742	32.414	31.868	31.397	30.563	29.632	28.832	29.395	28.732	27.738	26.850	0

Industria



2010	39.729	40.175	40.203	40.016	39.527	38.301	37.107	38.404	37.751	37.464	37.069	37.241
2011	38.525	39.167	39.359	39.373	38.987	38.369	37.777	38.742	38.486	38.888	38.885	39.103
2012	40.578	41.222	41.452	41.819	41.672	41.317	40.823	41.944	42.055	41.968	41.588	41.485
2013	42.763	42.894	42.730	42.725	42.314	41.611	40.791	41.364	40.914	40.220	39.290	39.008
2014	39.532	39.027	38.507	38.040	37.507	36.692	35.977	37.143	36.848	36.412	35.324	0

Servicios

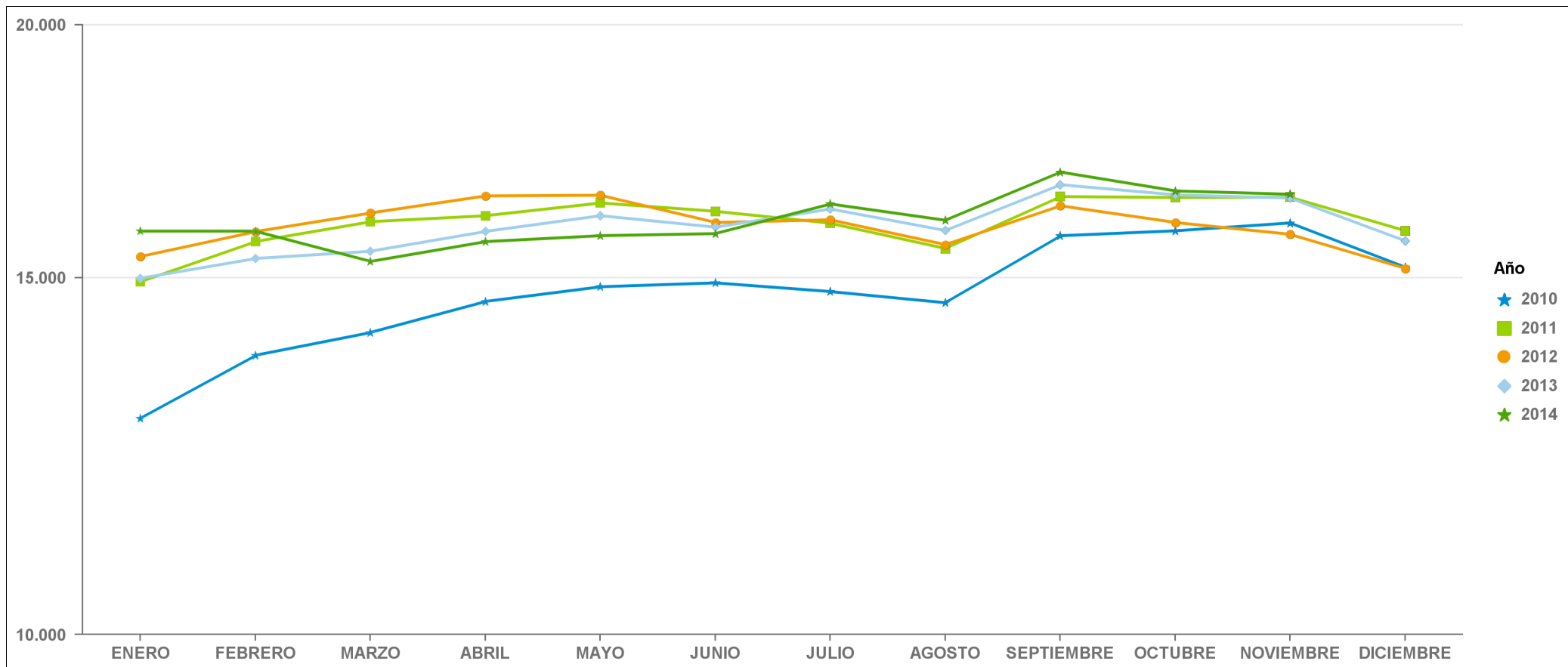


2010	134.633	138.919	140.551	142.079	140.697	138.385	136.721	139.783	141.907	141.897	141.412	140.976
2011	146.749	151.399	153.229	153.242	153.104	152.977	151.795	154.651	157.216	158.350	159.494	159.874
2012	166.623	171.033	173.227	174.899	175.413	174.352	177.117	180.040	182.554	181.192	179.964	177.739
2013	184.734	187.280	186.426	187.865	185.031	184.010	184.700	186.316	186.322	184.195	180.666	175.300
2014	180.636	181.180	179.481	177.991	177.224	174.999	175.338	178.015	178.347	175.430	172.466	0

ESTADÍSTICA PROVINCIA DE VALENCIA

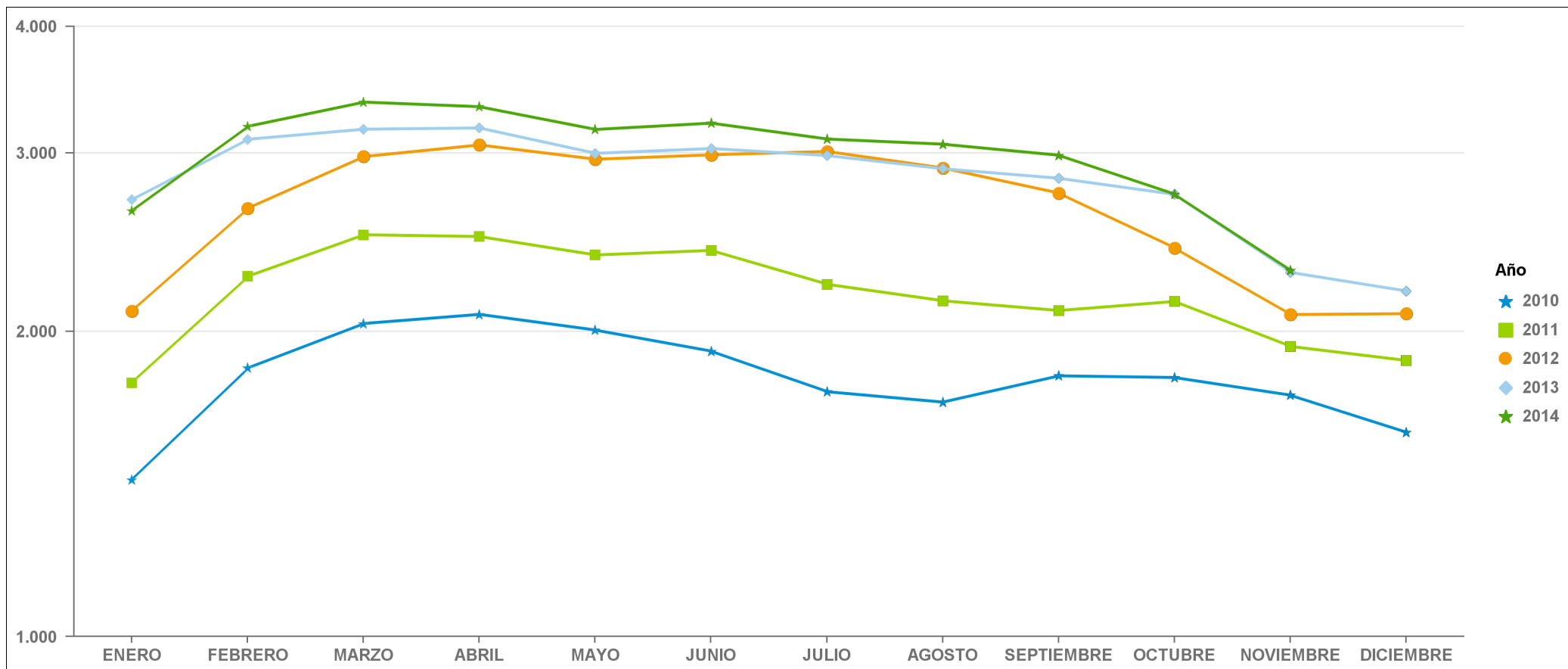
EVOLUCIÓN MENSUAL DEL PARO REGISTRADO POR SECTORES ECONÓMICOS PERÍODO 2010 - 2014

Sin actividad económica



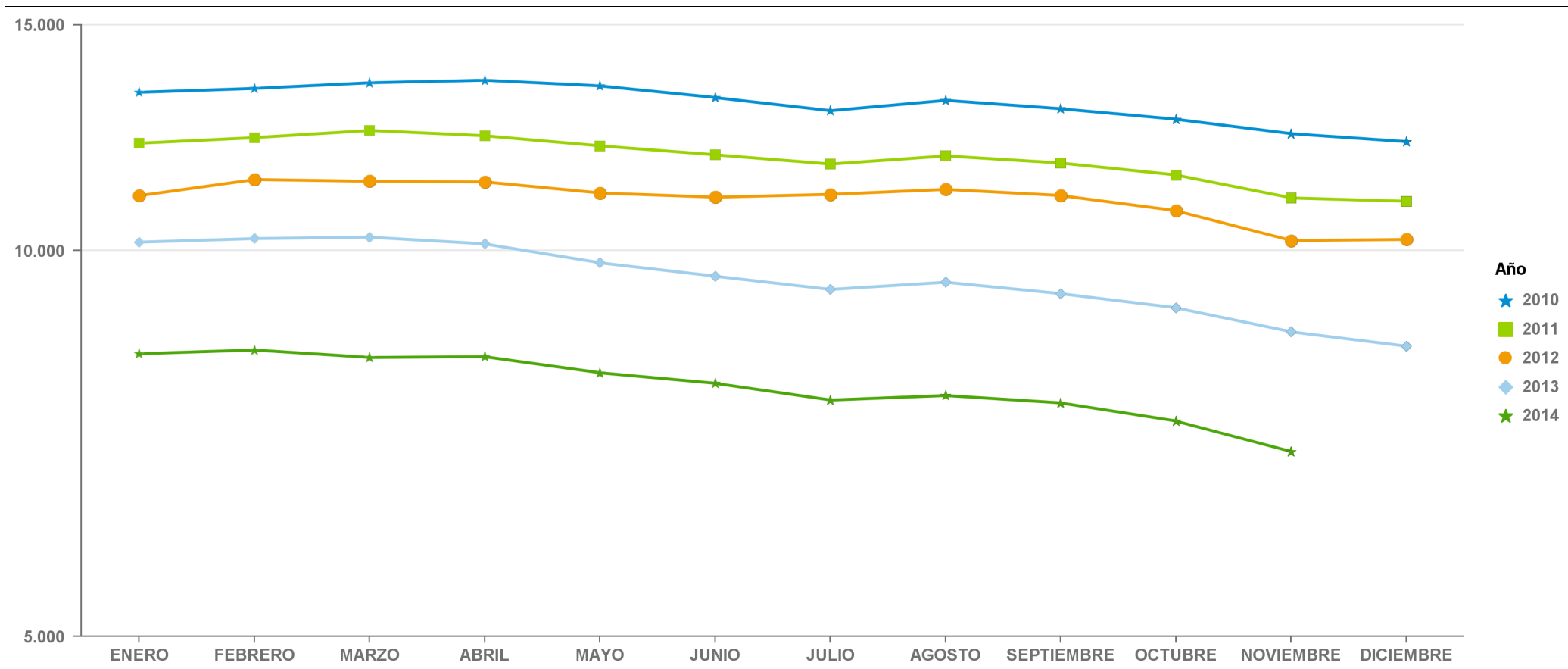
2010	12.785	13.735	14.096	14.602	14.848	14.914	14.767	14.580	15.735	15.823	15.966	15.179
2011	14.932	15.631	15.988	16.097	16.332	16.178	15.960	15.507	16.451	16.434	16.440	15.822
2012	15.367	15.809	16.147	16.464	16.476	15.973	16.023	15.575	16.281	15.973	15.760	15.159
2013	14.992	15.333	15.460	15.812	16.098	15.888	16.222	15.827	16.675	16.483	16.423	15.640
2014	15.818	15.817	15.281	15.630	15.736	15.773	16.314	16.013	16.917	16.557	16.494	0

Agricultura



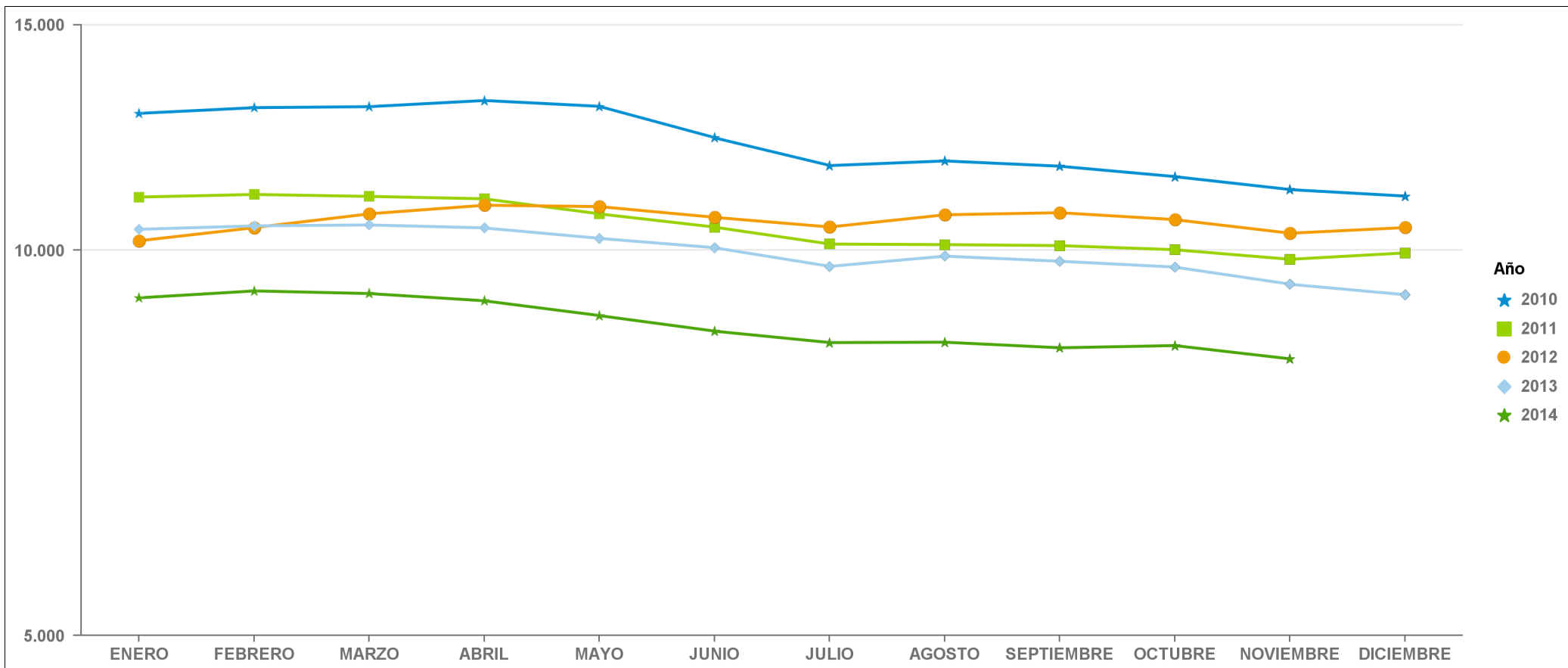
2010	1.428	1.840	2.036	2.079	2.006	1.912	1.744	1.703	1.808	1.801	1.730	1.590
2011	1.780	2.266	2.491	2.481	2.379	2.404	2.226	2.144	2.097	2.141	1.933	1.872
2012	2.095	2.645	2.975	3.055	2.957	2.987	3.010	2.899	2.738	2.417	2.078	2.082
2013	2.697	3.094	3.166	3.175	2.997	3.030	2.982	2.894	2.832	2.730	2.287	2.192
2014	2.630	3.186	3.367	3.332	3.164	3.210	3.096	3.060	2.984	2.731	2.297	0

Construcción



2010	13.287	13.380	13.517	13.579	13.441	13.162	12.855	13.097	12.900	12.659	12.335	12.160
2011	12.126	12.248	12.408	12.289	12.068	11.876	11.680	11.853	11.702	11.454	10.990	10.925
2012	11.035	11.360	11.325	11.312	11.088	11.006	11.061	11.161	11.038	10.741	10.180	10.201
2013	10.151	10.217	10.243	10.120	9.781	9.549	9.324	9.447	9.254	9.022	8.641	8.420
2014	8.308	8.364	8.252	8.264	8.028	7.878	7.644	7.707	7.605	7.361	6.967	0

Industria



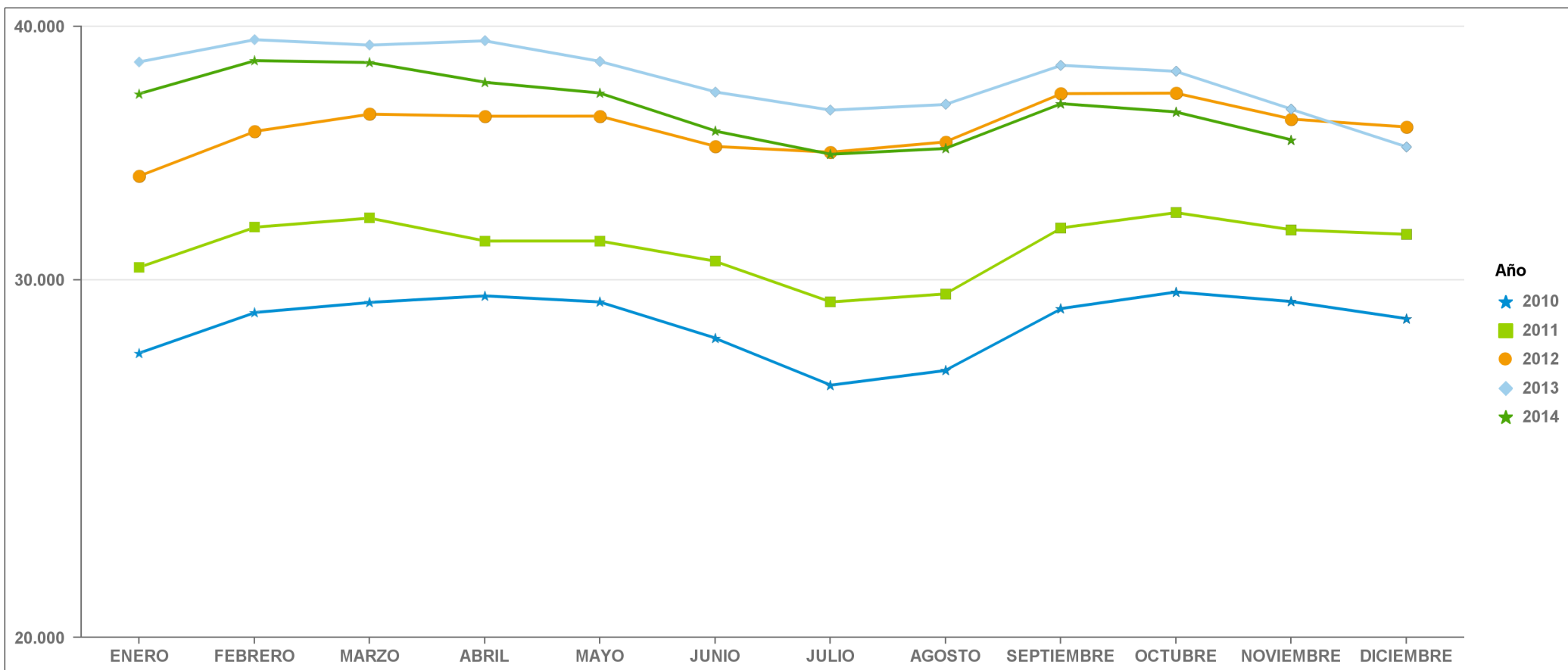
2010	12.790	12.922	12.945	13.090	12.952	12.241	11.643	11.741	11.630	11.414	11.151	11.021
2011	11.002	11.054	11.015	10.968	10.674	10.423	10.110	10.100	10.082	10.008	9.836	9.951
2012	10.170	10.414	10.676	10.842	10.815	10.608	10.425	10.657	10.697	10.564	10.309	10.415
2013	10.382	10.447	10.464	10.408	10.214	10.044	9.712	9.893	9.802	9.700	9.405	9.229
2014	9.178	9.293	9.249	9.129	8.889	8.644	8.468	8.474	8.389	8.423	8.223	0

ESTADÍSTICA PROVINCIA DE CASTELLÓN

EVOLUCIÓN MENSUAL DEL PARO REGISTRADO POR SECTORES ECONÓMICOS

PERÍODO 2010 - 2014

Servicios



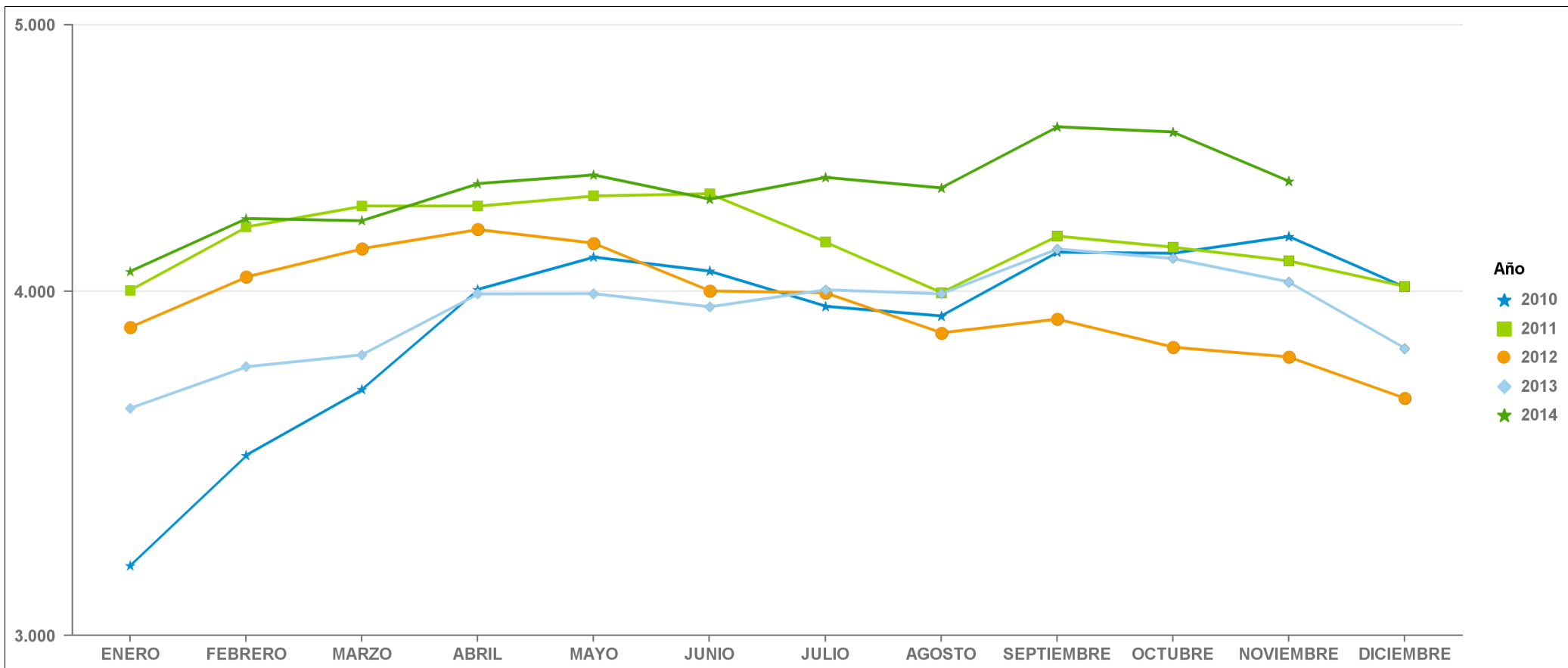
2010	27.609	28.911	29.245	29.464	29.259	28.082	26.623	27.075	29.039	29.595	29.273	28.710
2011	30.430	31.846	32.181	31.354	31.355	30.642	29.258	29.530	31.821	32.381	31.756	31.592
2012	33.748	35.503	36.207	36.122	36.125	34.904	34.676	35.086	37.058	37.080	36.006	35.682
2013	38.415	39.399	39.155	39.347	38.436	37.131	36.370	36.607	38.269	38.008	36.409	34.883
2014	37.050	38.473	38.390	37.540	37.082	35.520	34.596	34.824	36.642	36.296	35.163	0

ESTADÍSTICA PROVINCIA DE CASTELLÓN

EVOLUCIÓN MENSUAL DEL PARO REGISTRADO POR SECTORES ECONÓMICOS

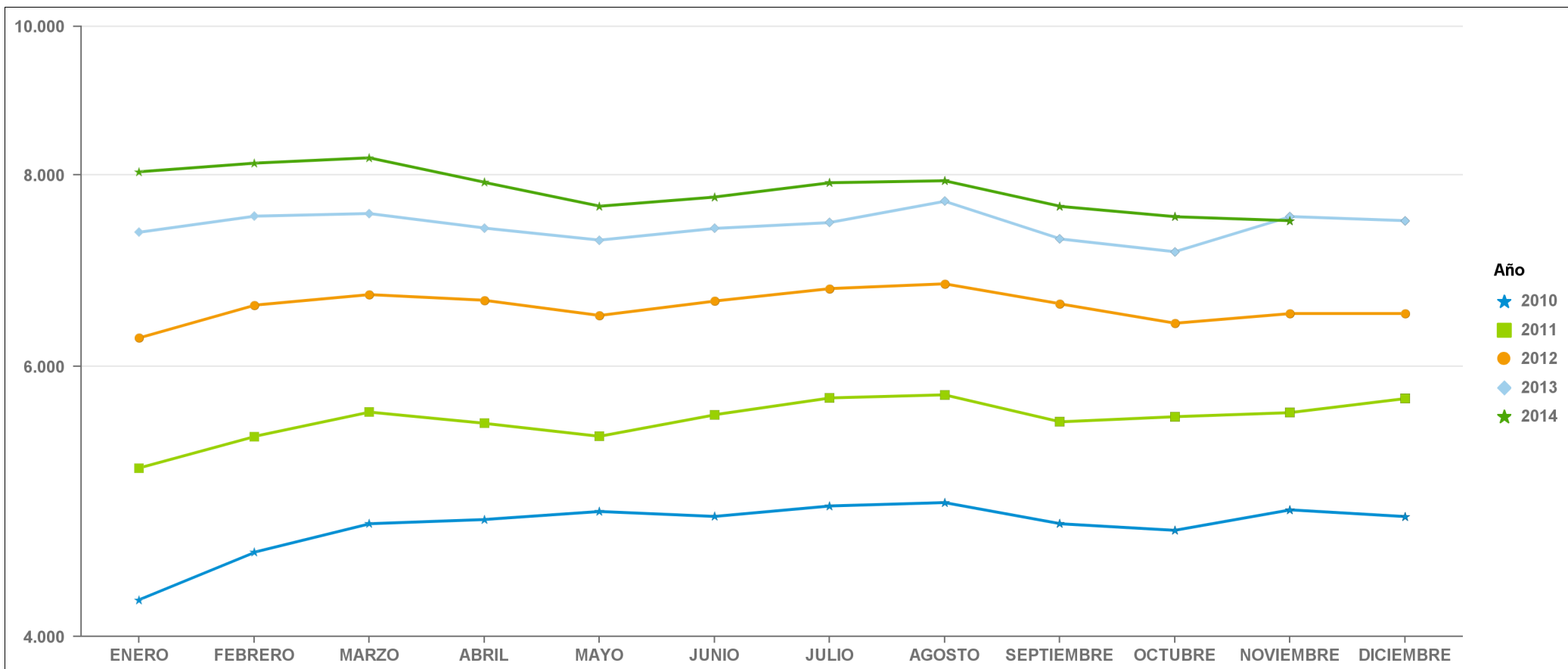
PERÍODO 2010 - 2014

Sin actividad económica



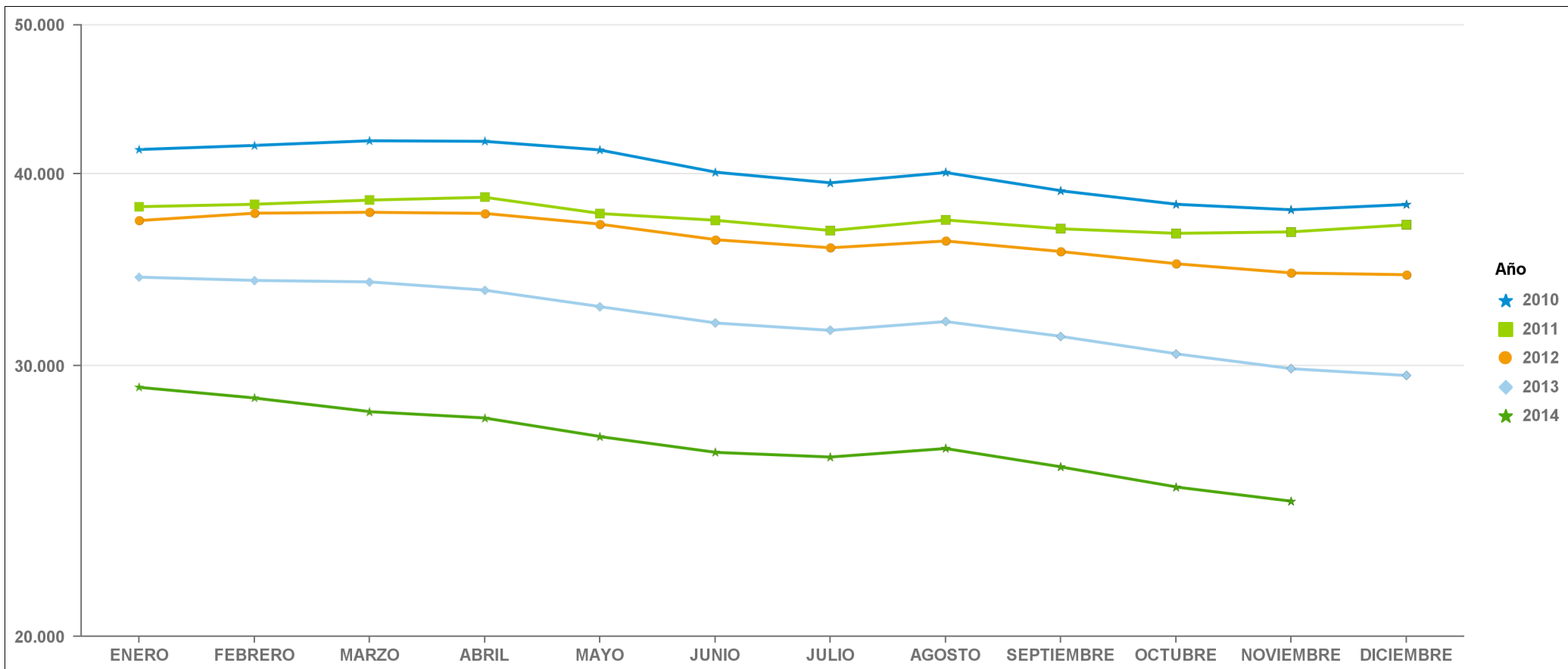
2010	3.180	3.488	3.685	4.007	4.117	4.069	3.951	3.919	4.134	4.130	4.189	4.014
2011	4.004	4.222	4.296	4.296	4.333	4.341	4.169	3.996	4.190	4.151	4.104	4.017
2012	3.882	4.049	4.146	4.213	4.165	4.002	3.996	3.864	3.909	3.818	3.787	3.658
2013	3.628	3.756	3.794	3.992	3.993	3.949	4.006	3.992	4.145	4.112	4.032	3.814
2014	4.068	4.252	4.244	4.378	4.410	4.321	4.401	4.362	4.591	4.571	4.386	0

Agricultura



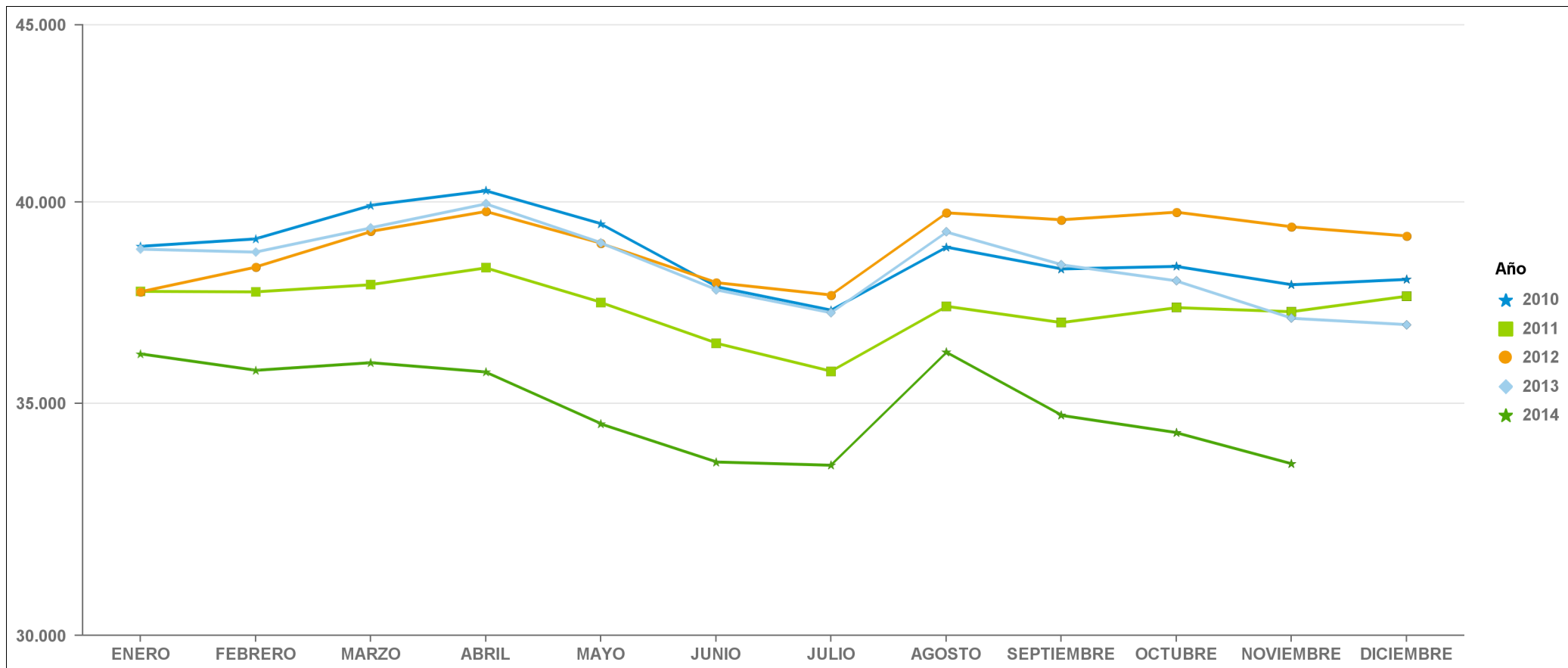
2010	4.226	4.539	4.738	4.768	4.826	4.790	4.866	4.891	4.738	4.691	4.838	4.789
2011	5.151	5.401	5.603	5.509	5.402	5.580	5.723	5.750	5.521	5.564	5.598	5.718
2012	6.262	6.578	6.684	6.627	6.477	6.619	6.744	6.793	6.592	6.402	6.496	6.496
2013	7.339	7.519	7.549	7.386	7.253	7.382	7.447	7.690	7.267	7.127	7.515	7.468
2014	8.037	8.142	8.208	7.911	7.632	7.738	7.906	7.930	7.631	7.513	7.468	0

Construcción



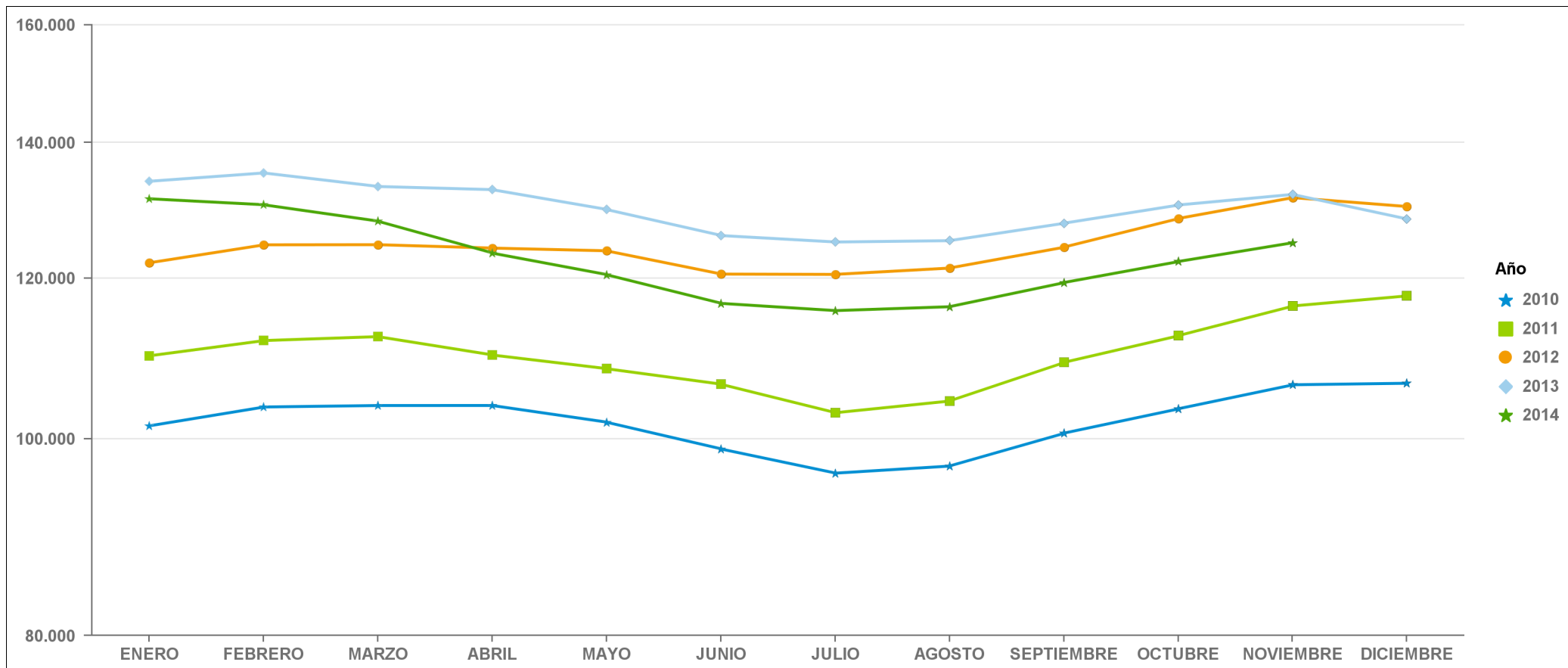
2010	41.479	41.736	42.027	41.990	41.450	40.095	39.459	40.076	38.993	38.212	37.898	38.201
2011	38.074	38.213	38.451	38.615	37.686	37.307	36.736	37.325	36.835	36.583	36.664	37.054
2012	37.289	37.705	37.756	37.693	37.089	36.240	35.798	36.169	35.600	34.955	34.476	34.385
2013	34.259	34.091	34.018	33.599	32.778	31.987	31.633	32.056	31.351	30.543	29.868	29.565
2014	29.047	28.586	28.007	27.743	26.980	26.350	26.166	26.504	25.782	25.018	24.489	0

Industria



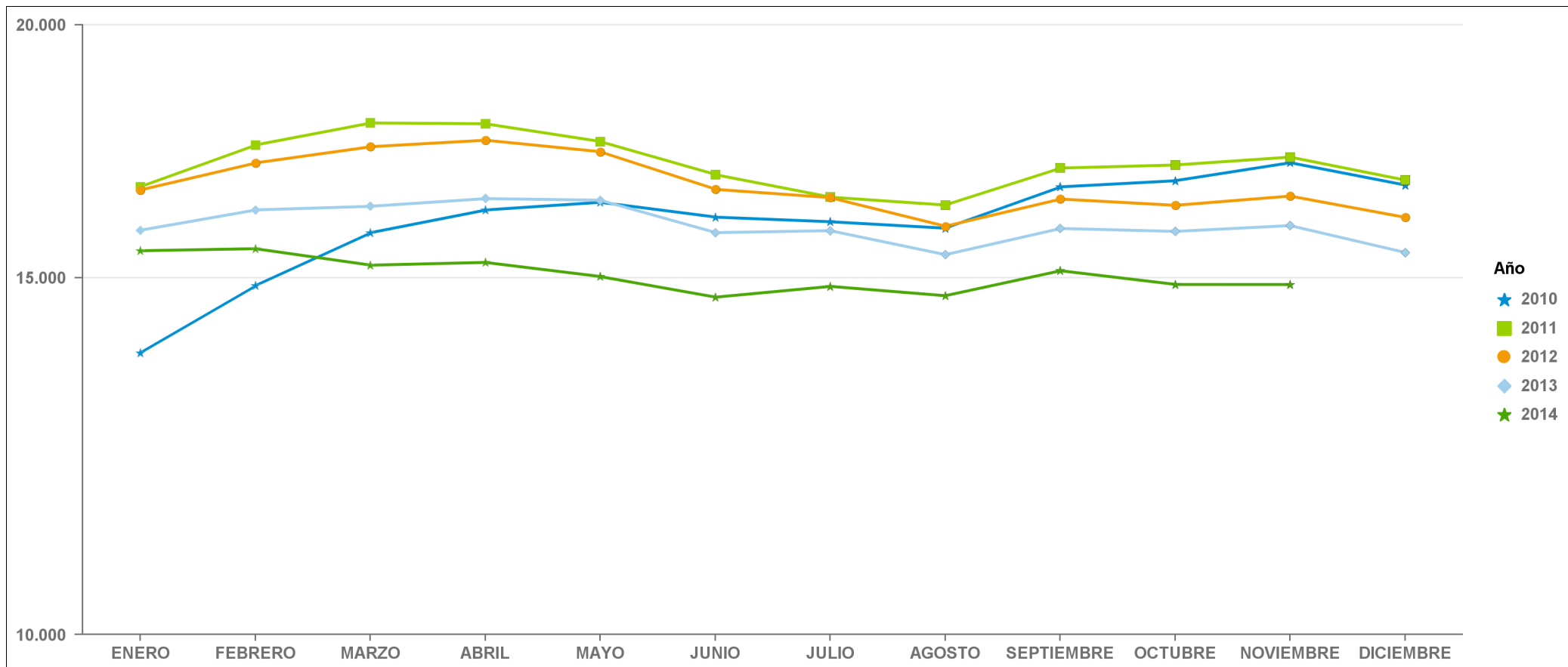
2010	38.844	39.037	39.916	40.306	39.428	37.819	37.230	38.826	38.265	38.330	37.865	38.001
2011	37.699	37.687	37.867	38.294	37.424	36.427	35.750	37.330	36.925	37.295	37.193	37.580
2012	37.689	38.314	39.230	39.756	38.921	37.920	37.608	39.719	39.534	39.736	39.351	39.112
2013	38.770	38.695	39.325	39.958	38.933	37.740	37.165	39.218	38.372	37.963	37.032	36.876
2014	36.168	35.774	35.957	35.734	34.524	33.662	33.589	36.213	34.721	34.324	33.620	0

Servicios



2010	101.483	103.685	103.856	103.861	101.910	98.862	96.181	96.962	100.646	103.468	106.332	106.514
2011	109.881	111.801	112.306	109.986	108.291	106.400	103.006	104.391	109.065	112.420	116.276	117.622
2012	122.115	124.639	124.655	124.176	123.793	120.565	120.524	121.394	124.306	128.415	131.503	130.169
2013	133.954	135.236	133.168	132.693	129.735	125.958	125.036	125.226	127.730	130.397	131.983	128.335
2014	131.327	130.438	128.029	123.475	120.485	116.625	115.667	116.183	119.409	122.295	124.944	0

Sin actividad económica



2010	13.773	14.866	15.788	16.202	16.345	16.071	15.987	15.870	16.633	16.750	17.098	16.666
2011	16.635	17.444	17.887	17.871	17.513	16.867	16.440	16.293	16.993	17.052	17.207	16.760
2012	16.574	17.092	17.410	17.540	17.311	16.587	16.431	15.904	16.405	16.288	16.461	16.065
2013	15.833	16.203	16.270	16.413	16.383	15.790	15.826	15.398	15.866	15.812	15.918	15.436
2014	15.469	15.505	15.217	15.265	15.021	14.673	14.855	14.697	15.122	14.887	14.886	0